



# ANANTARA

RESIDENCES MIAMI

അറിവ്

ANANTARA:  
*Sanskrit (adj.)*



*Definition: Without end*

A name that evokes the thrill of discovery.

The allure of new horizons.

The promise of generous hospitality.

A celebration of the journey of life.



“

TRUE LUXURY IS TIME,  
THE FREEDOM TO PAUSE,  
TO EXPLORE, AND TO  
EXPERIENCE THE WORLD  
MORE DEEPLY.

---

WILLIAM E. HEINECKE,  
FOUNDER AND CHAIRMAN OF MINOR INTERNATIONAL

01. **Origin** pg. 08  
THE WORLD OF ANANTARA

02. **Arrival** pg. 18  
EAST MEETS WEST

03. **Discovery** pg. 32  
MIAMI'S SACRED COAST

04. **Immersion** pg. 40  
NATURE & ARCHITECTURE

05. **Residences** pg. 48  
SANCTUARIES ABOVE WATER

06. **Ritual** pg. 58  
WELLNESS TRADITIONS

07. **Hospitality** pg. 68  
SIGNATURE EXPERIENCES

08. **Collective** pg. 76  
VISIONARIES & TEAM



ARTIST'S CONCEPTUAL RENDERING. SEE DISCLAIMER PAGE.

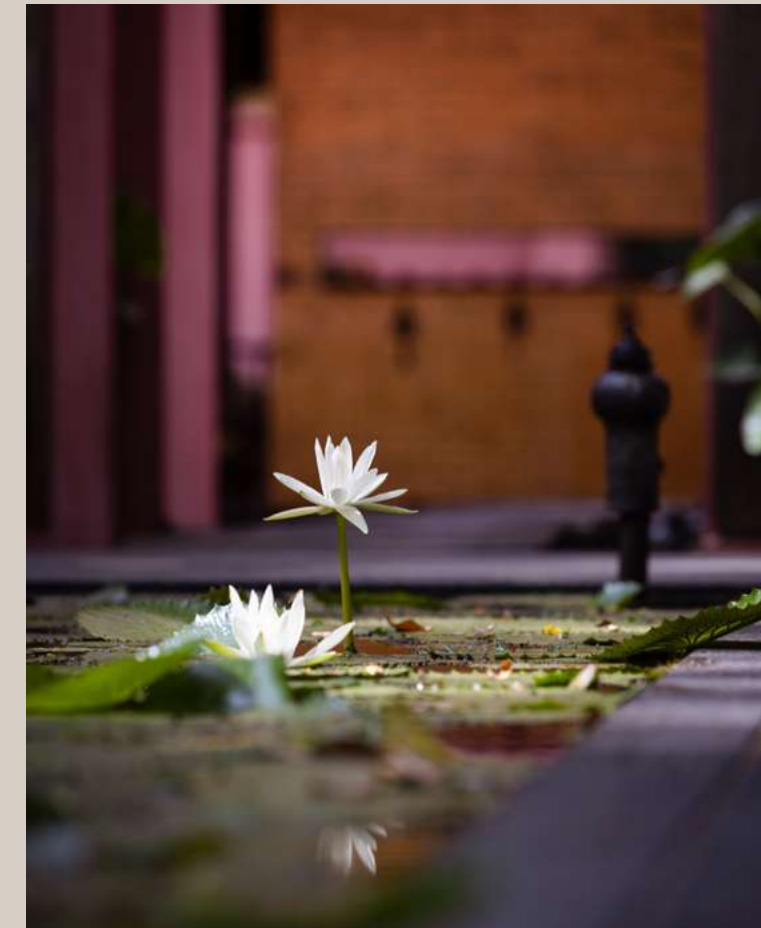




YOUR JOURNEY BEGINS HERE

CHAPTER ONE

# ORIGIN



THE WORLD OF ANANTARA

---

Discover the world of Anantara, where peace, balance, and the gentle rhythm of nature guide every moment.



ANANTARA HUA HIN RESORT



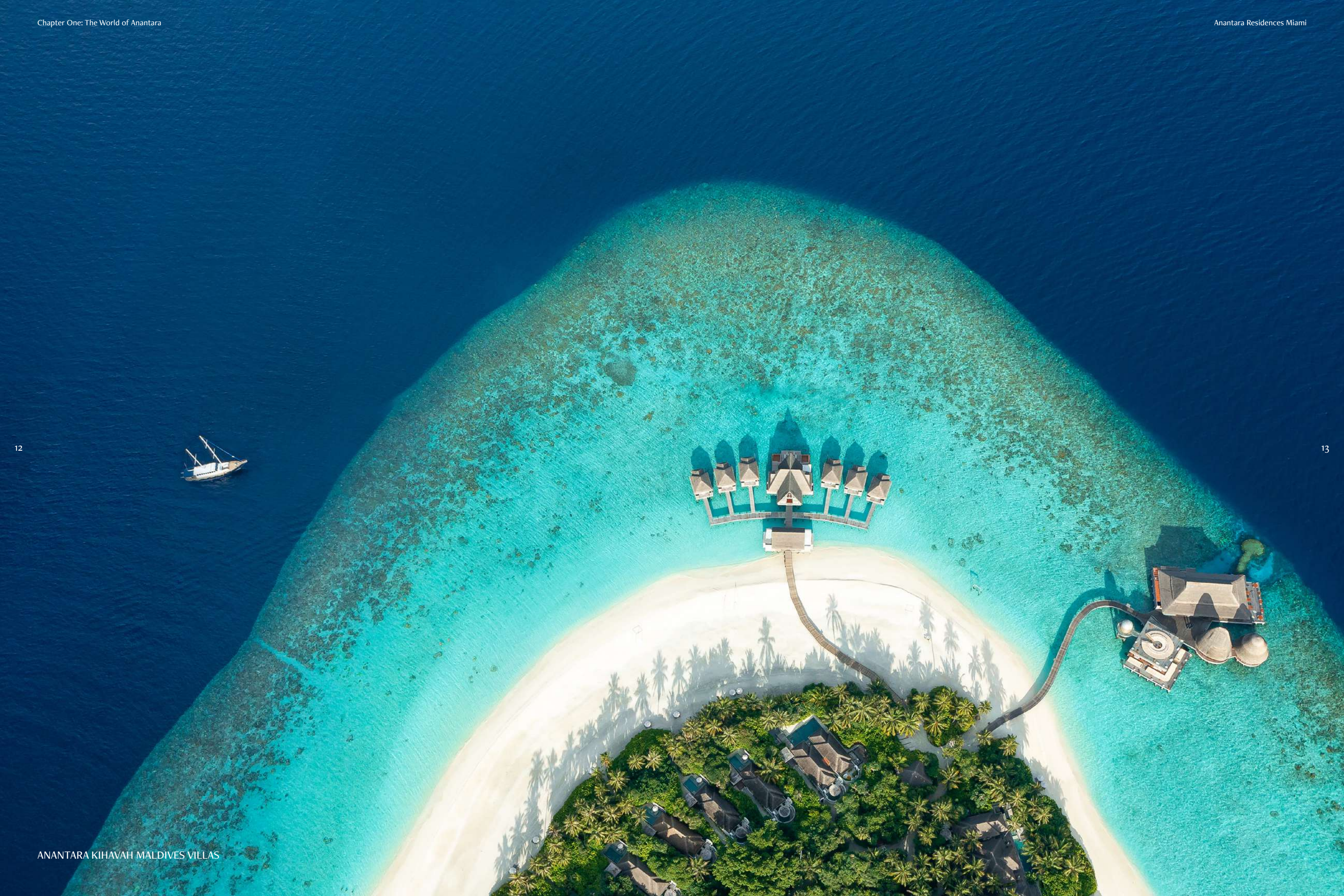
ANANTARA LAYAN RESORT PHUKET

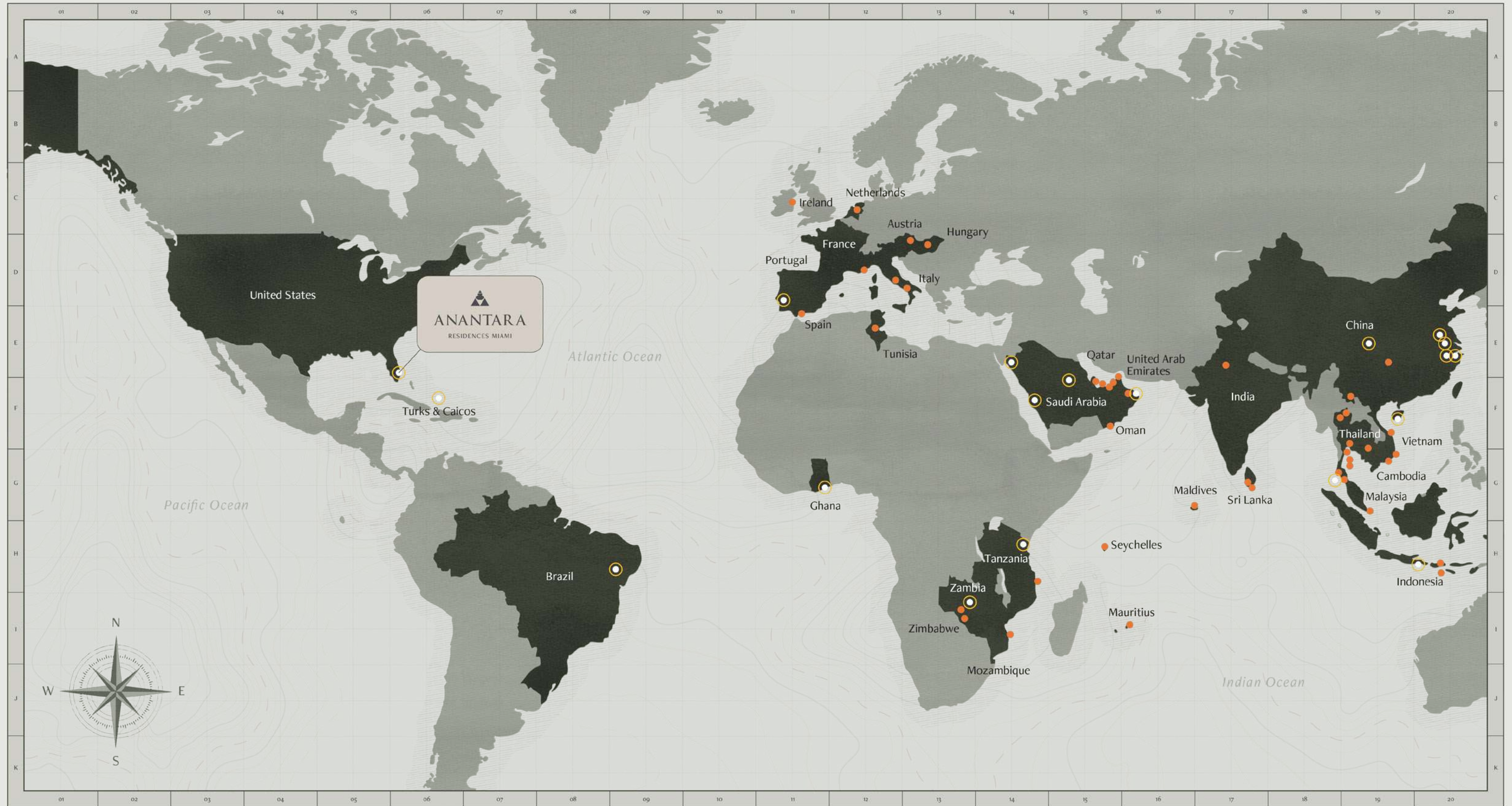


## The Anantara Story

Anantara offers a world of discovery, wherever it calls home. The first Anantara resort opened its doors in Hua Hin, Thailand, in 2001. Since then, Anantara has invited guests to embark on unforgettable journeys, creating lasting memories in some of the world's most extraordinary destinations. Through years of thoughtful evolution and innovation, Anantara has grown into a global hospitality brand that feels as at home along the historic streets of Rome, Budapest, and Dubai as it does among the palm-fringed atolls of the Maldives. With each passing year, the portfolio continues to expand, introducing new destinations and remarkable places to experience the spirit of Anantara.

Rooted in Thai culture, Anantara brings a deeply considered approach to luxury hospitality, one shaped by authenticity, warmth, and a genuine sense of connection. The Anantara name, derived from the Sanskrit word meaning "without end," reflects a philosophy of freedom, flow, and harmony. This enduring spirit is expressed through gracious service, meaningful local experiences, and a commitment to making every moment feel personal, memorable, and distinctly Anantara.





# ANANTARA INTERNATIONAL LOCATIONS

Over 50 Locations across 26 Countries.

<b>AUSTRIA</b> Vienna	Chengdu * Hangzhou *Guiyang Nanjing * Sanya * Shaoxing * Xishuangbanna	<b>INDIA</b> Jaipur	<b>MALAYSIA</b> Desaru	<b>NETHERLANDS</b> Amsterdam	<b>SAUDI ARABIA</b> Jeddah * NEOM * Riyadh – Diriyah Gate *	<b>TANZANIA</b> Zanzibar *	Phuket, Layan Phuket, Mai Khao	<b>DUBAI, WORLD ISLANDS</b> Ras Al Khaimah Sharjah *	<b>ZAMBIA</b> Kafue River Tented Camp * Victoria Falls
<b>BRAZIL</b> Bahia * Ceará *		<b>INDONESIA</b> Bali, Canggu * Bali, Ubud Bali, Uluwatu	<b>MALDIVES</b> Dhigufinolhu Kihavah Veligandu	<b>OMAN</b> Al Jabal Al Akhdar Bandar Al Khairan * Salalah	<b>SEYCHELLES</b> Mahé	<b>THAILAND</b> Bangkok, Riverside Chiang Mai Golden Triangle Hua Hin Koh Phangan Koh Phi Phi * Koh Samui, Bophut Koh Samui, Lawana Koh Yao Yai	<b>TUNISIA</b> Tozeur	<b>UNITED ARAB EMIRATES</b> Abu Dhabi, Al Sahel Abu Dhabi, Al Yamm Abu Dhabi, Desert Islands Abu Dhabi, Qasr Al Sarab Abu Dhabi, Santorini Retreat Dubai, Downtown Dubai, The Palm	<b>ZIMBABWE</b> Victoria Falls
<b>CAMBODIA</b> Siem Reap	<b>FRANCE</b> Nice	<b>IRELAND</b> Dublin	<b>MAURITIUS</b> Le Chaland	<b>PORTUGAL</b> Vila Viçosa *	<b>SRI LANKA</b> Kalutara Tangalle			<b>VIETNAM</b> Hoi An Mui Ne Quy Nhon	
<b>CARIBBEAN</b> Turks and Caicos	<b>GHANA</b> Accra *	<b>ITALY</b> Amalfi Rome	<b>MOZAMBIQUE</b> Bazaruto Island Medjumbe Island	<b>QATAR</b> Doha, Banana Island					
<b>CHINA</b> Anji *	<b>HUNGARY</b> Budapest								

● Existing properties  
○ Coming soon

## A journey into The White Lotus

# Captivating A Global Audience



THE NEW SERIES OF WHITE LOTUS IS FILMED IN THAILAND. FABIO LOVINO/HBO



JASON ISAACS WITH PARKER POSEY IN A SCENE FROM SEASON 3 OF THE WHITE LOTUS. FABIO LOVINO/HBO, VIA ASSOCIATED PRESS



In 2023, Thailand was chosen as the location for the third season of the hit HBO TV series *The White Lotus*. To our delight, three of our resorts were selected as key filming locations — Anantara Bophut Koh Samui Resort, Anantara Lawana Koh Samui Resort and Anantara Mai Khao Phuket Villas. As a global luxury hotel brand dedicated to immersing guests in local traditions, Anantara Hotels & Resorts was the perfect choice for a series featuring the breathtaking landscapes, rich heritage and stunning architecture of this extraordinary country.

Each of the featured resorts embodies the essence of Thai island life, from the serene beaches of Koh Samui to the stunning beauty of Phuket's coastline. To revisit some of the key locations from the series, begin at Anantara Mai Khao's wellness sanctuary and spa overlooking the lotus-filled lagoon, explore the walkway featured in the series' dramatic finale and visit Belinda's villa. At Anantara Bophut, stop by the jewellery store, the lobby and Gaitok's security station; and at Anantara Lawana, the iconic Singing Bird Lounge. Or simply explore the resorts yourself and see which iconic locations you recognize from the series.



CHAPTER TWO  
**ARRIVAL**



EAST MEETS WEST

---

Now, Anantara arrives in North America for the first time, introducing a new sanctuary for five-star living and vitality in Miami.

### A JOURNEY THAT BEGINS THE MOMENT YOU ARRIVE



Step inside and calm begins to unfold. A sense of quiet luxury surrounds you; effortless, refined, and deeply restorative. This is your sanctuary, where stillness and energy live in harmony, and where daily rituals are elevated through a spirit of barefoot elegance.

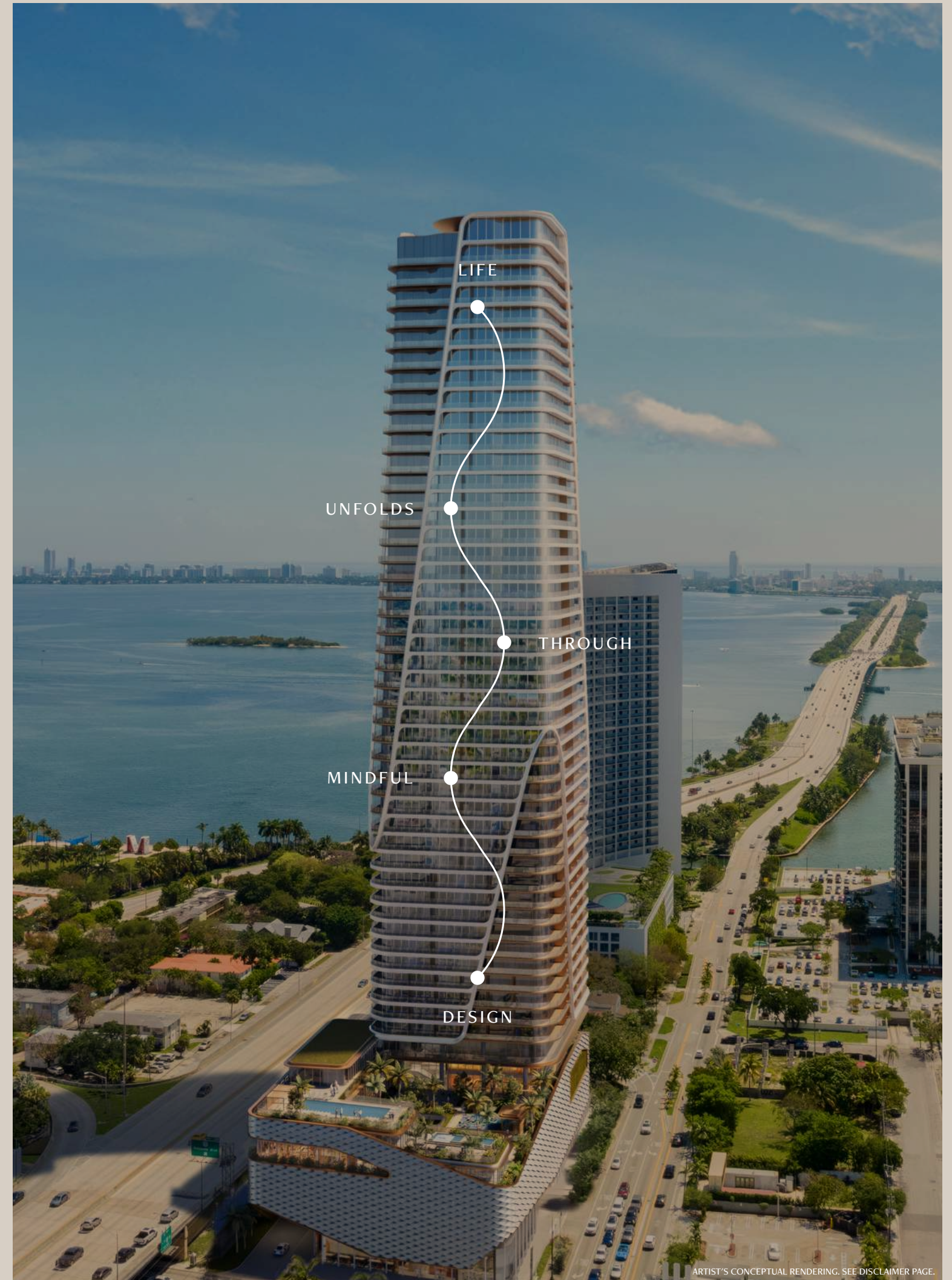
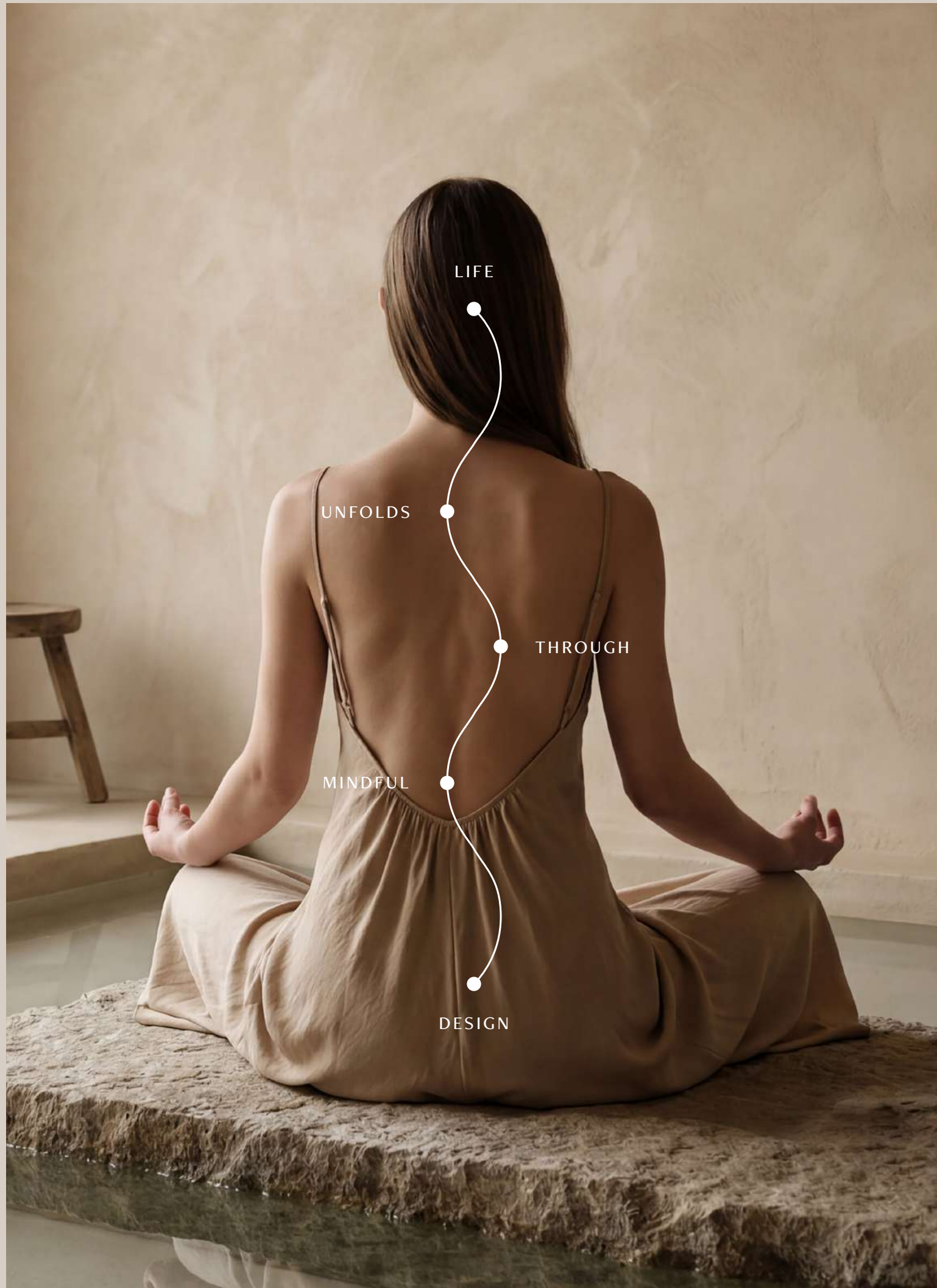
Within these walls, strength and renewal converge, awakening a deeper connection to your wellbeing. Light, texture, and space are composed with intention, creating an atmosphere that feels both serene and quietly sophisticated. Every element is designed to guide your journey inward while nourishing the life you live beyond.

An oasis rising at the intersection of art, culture, and leisure, a place where Miami's creative pulse meets tranquil retreat, at the gateway to the city's most coveted districts.



WELCOME TO A NEW WAY OF LIVING.  
ARRIVAL BECOMES TRANSFORMATION.  
HOME BECOMES YOUR PORTAL.







“  
FROM THE MOMENT YOU  
ARRIVE, THE IDEA IS TO  
TRANSPORT YOU INTO  
ANOTHER WORLD, CREATING  
A JOURNEY THAT UNFOLDS  
AT EVERY TURN

LOUIS BIRDMAN,  
ONE THOUSAND GROUP

## The Art of Living in Light

From its orientation to its facade, this tower was thoughtfully designed to maximize natural light throughout the day, ensuring that every residence enjoys an abundance of sunshine across all seasons. That same design intention extends to the amenity podium below, where the pool and outdoor spaces are strategically positioned to capture peak daylight hours, creating a sun-soaked retreat for residents year-round.



**EAST MEETS WEST:  
ANANTARA RESIDENCES MIAMI**

Above the pulse of the city, a more balanced way of living begins to rise. Overlooking the calm tranquility of Biscayne Bay, Anantara Residences Miami brings together the warmth of Southeast Asian hospitality, a deep sense of mindfulness and wellbeing, and the ease of refined luxury living. Here, East and West exist in effortless harmony, creating a destination defined by serenity, connection, and a new rhythm for Miami life.



ARTIST'S CONCEPTUAL RENDERING. SEE DISCLAIMER PAGE.



**Private Residences**

Luxury living is redefined through private, expansive residences designed for wellness, comfort, and effortless everyday vitality.



**Serviced Residences**

Luxury turnkey residences with the flexibility of an optional rental program.



**Anantara Resort**

50 guest suites with signature experiences, a tranquil pool setting, and Vitality Center.



**Vitality Center**

Bringing ancient and modern Southeast Asian philosophies to Miami luxury living, dedicated to longevity, mindfulness, movement, restoration, vitality, and tranquility.



**Spaces for Discovery**

Curated experiences, distinctive dining destinations, and a signature helipad create moments of access, exploration, and elevated arrival above Miami.



**Living in Harmony**

Nature-inspired design by KPF Architects, with interiors by Studio Urquiola and Thai-inspired landscape design by Plandscape, utilizing ethically and responsibly sourced materials to achieve Green and WELL certifications.

A SENSE OF

QUIET LUXURY

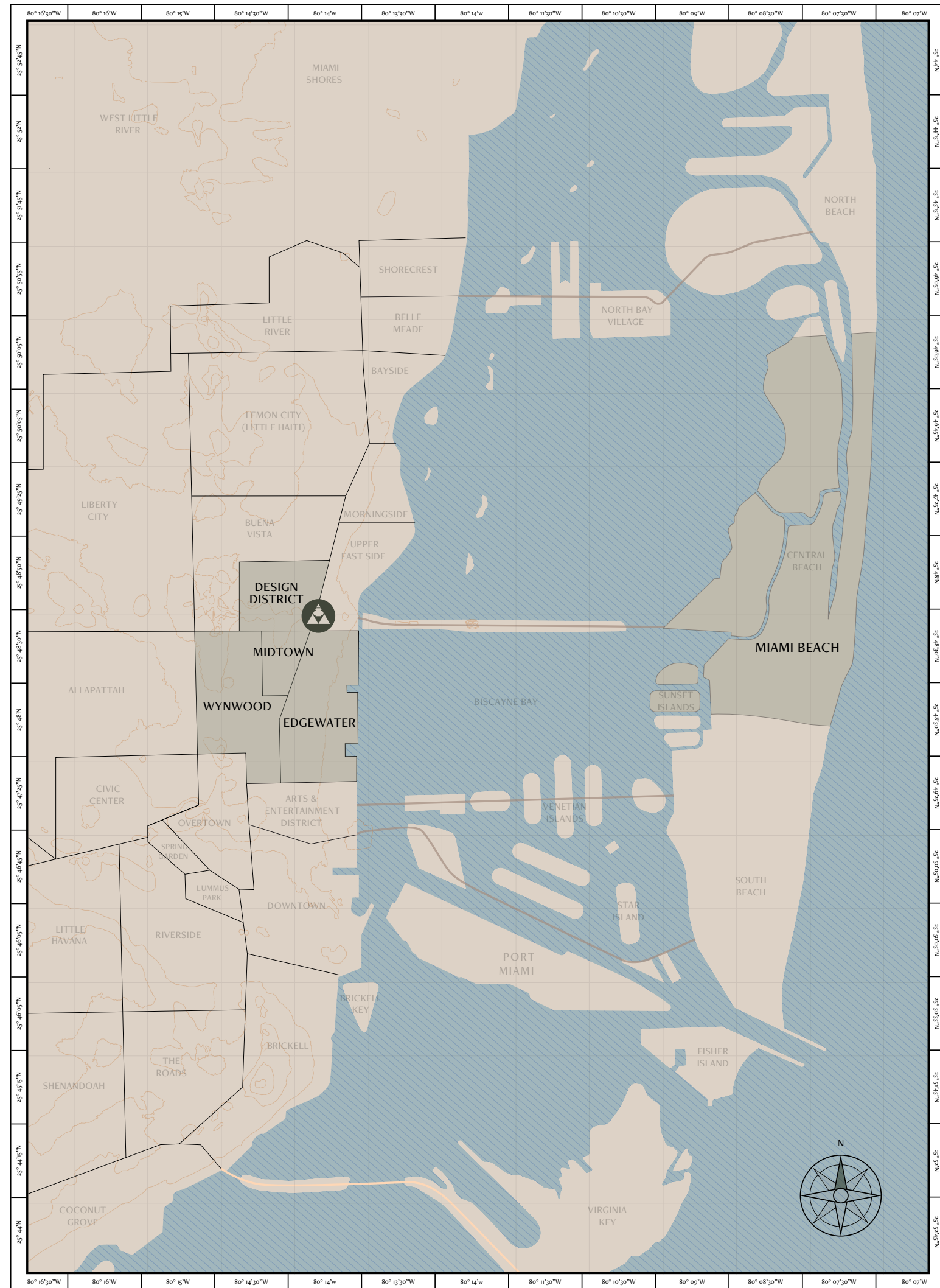
SURROUNDS YOU

CHAPTER THREE  
**DISCOVERY**



LIFE IN LUMINOUS FLOW

Where sunlight, culture, and coastal energy come together in effortless rhythm.



# The Convergence of Five Neighborhoods

“

THIS LOCATION BRINGS TOGETHER FIVE OF MIAMI'S MOST DYNAMIC NEIGHBORHOODS. IT IS QUICKLY BECOMING THE NEW CENTER OF THE CITY, AND ANANTARA IS THE PERFECT BRAND TO BRING THAT EXPERIENCE TO THIS PLACE.

MICHAEL KONIG,  
ONE THOUSAND GROUP

WHERE FIVE VIBRANT NEIGHBORHOODS MEET, ART, CULTURE, AND LEISURE NATURALLY UNFOLD.

Positioned at one of Miami's most storied crossroads, this address places residents at the living edge of five of the city's most sought-after neighborhoods. From the world-class galleries and luxury boutiques of Miami Design District, to the electric street art and creative energy of Wynwood, to the coastal ease of Miami Beach, every facet of Miami life is immediately within reach.



Deliberately assembled to sit at the gateway of Edgewater's high-rise zone, this site marks an entrance point where Biscayne Boulevard, 36th Street, and I-95 converge, connecting residents effortlessly from the airport to the beach. It is a location that does not ask you to choose between culture, community, and coastline, here, they are simply the fabric of everyday life.

A World Within Reach.

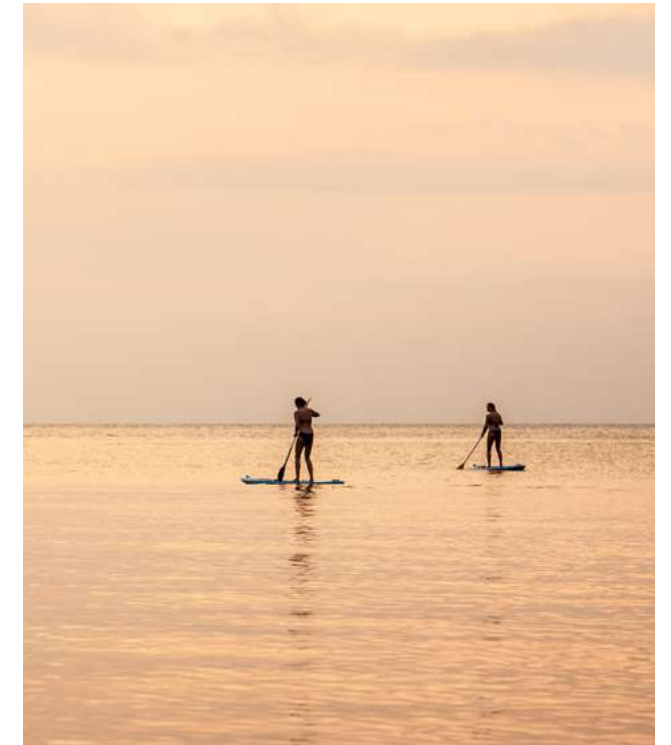
# Every direction leads to something extraordinary

- 10 Minute Drive to Miami International Airport
- 5 Minute Walk to Miami Design District
- 6 Minute Bike to Wynwood Walls
- 10 Minute Drive to Miami Beach across Biscayne Bay
- 7 Minute Jog to Margaret Pace Park for bayfront running trails
- 8 Minute Drive to Downtown Miami
- 12 Minute Drive to Brickell City Centre

- 3 Minute Drive to Midtown Miami for boutique shopping and cafés
- 6 Minute Drive to COTE Miami for Michelin-star dining
- 5 Minute Bike to Mandolin Aegean Bistro
- 9 Minute Drive to Pérez Art Museum Miami
- 9 Minute Drive to Adrienne Arsht Center for the Performing Arts
- 11 Minute Drive to Kaseya Center for premier events and games

- 12 Minute Drive to South Pointe Park
- 7 Minute Drive to The Moore Miami for curated cultural experiences
- 6 Minute Walk to Pura Vida Miami
- 8 Minute Bike to KYU Miami
- 15 Minute Drive to Bal Harbour Shops
- 14 Minute Drive to Faena District
- 18 Minute Drive to Surfside Beach for a quieter ocean escape
- 2 Minute Walk to the waterfront along Biscayne Bay

- 6 Minute Jog to sunrise views along the Venetian Causeway
- 9 Minute Drive to Miami Worldcenter
- 11 Minute Drive to Fisher Island Ferry Terminal
- 13 Minute Drive to PortMiami for yachting and global departures
- 16 Minute Drive to Aventura Mall
- 20 Minute Drive to Oleta River State Park for kayaking and nature trails





ENTER

EXHALE

ARRIVE

CHAPTER FOUR

# IMMERSION



NATURE & ARCHITECTURE

---

Every arrival is a departure from the ordinary.

“ THE EXPERIENCE BEGINS THE MOMENT YOU ARRIVE, IT’S ABOUT SETTING A TONE, CREATING A FEELING, AND TRANSPORTING YOU INTO A COMPLETELY DIFFERENT WORLD.

KEVIN S. VENGER,  
ONE THOUSAND GROUP



42

43



# A Study in Light and Form

“

FROM THE MOMENT YOU ENTER THE SITE, YOU ARE TRANSPORTED, YOU LEAVE THE CITY BEHIND AND ARRIVE IN A CALM, LUSH WORLD THAT FEELS ENTIRELY YOUR OWN.”

ROBERT WHITLOCK,  
KPF ARCHITECTS

The architecture, envisioned by Kohn Pedersen Fox in collaboration with ODP Architecture & Design, rises as a contemporary expression of balance between form, light, and environment. Its presence is both sculptural and serene, shaped by a dialogue with the surrounding bay, the movement of air, and the shifting qualities of Miami's light. Rather than imposing, the design unfolds with a sense of calm precision, where proportions feel considered, transitions feel fluid, and the experience of space is as important as its silhouette on the skyline.



## ARCHITECTURE IN HARMONY WITH NATURE.

Inspired by the rhythms of nature and the philosophies that define Anantara, the architecture embraces a quiet harmony between structure and sensation. Layers of materiality are thoughtfully composed to evoke warmth, tactility, and a connection to the elements, capturing the interplay of sun, shadow, breeze, and reflection. Each detail contributes to an atmosphere that feels both grounded and elevated, where interiors and exteriors exist in dialogue, and where the boundaries between living, wellness, and retreat begin to dissolve. It is an architecture not only to be seen, but to be experienced, supporting a way of life that is intentional, balanced, and deeply attuned to its surroundings.

# FORMED BY NATURE, CRAFTED FOR RADIANCE

Rooted in the inherent geometry of the manicured palm, the podium's lattice framework translates nature's own thatched grid into precision-crafted metal. Designed for Miami's extraordinary light, the facade feels both rigorously designed and organically alive, a surface that shifts and breathes from dawn to dusk.

Alive with light



Patterns of nature



Botanical rhythm





A SENSE OF QUIET LUXURY  
SURROUNDS YOU;

EFFORTLESS, REFINED,  
AND DEEPLY RESTORATIVE.

CHAPTER FIVE  
**RESIDENCES**



YOUR SANCTUARY ABOVE THE WATER

---

A new place of balance is rising, one where hospitality, wellness,  
and private living come together in harmony.





## Serenity, Shaped by Design

---

Interiors are conceived as immersive environments that engage the senses. Guided by Patricia Urquiola's vision, the design draws together Miami's radiant light, tropical humidity, sea-washed energy, and cultural vibrancy with Anantara's sense of ritual, serenity, and soulful discovery.



Warm, tactile materials, layered textures, and a nuanced interplay of light and shadow create a residential experience that is both grounded and transportive, at once intimate, fluid, and deeply connected to its

surroundings. Here, East and West, city and sanctuary, architecture and emotion converge to create interiors that invite a subtle transformation: a shift in rhythm, a sense of ease, and a more meaningful way of living.







ENERGY

BALANCE

TRANQUILITY

CHAPTER SIX  
**RITUAL**



WELLNESS TRADITIONS

---

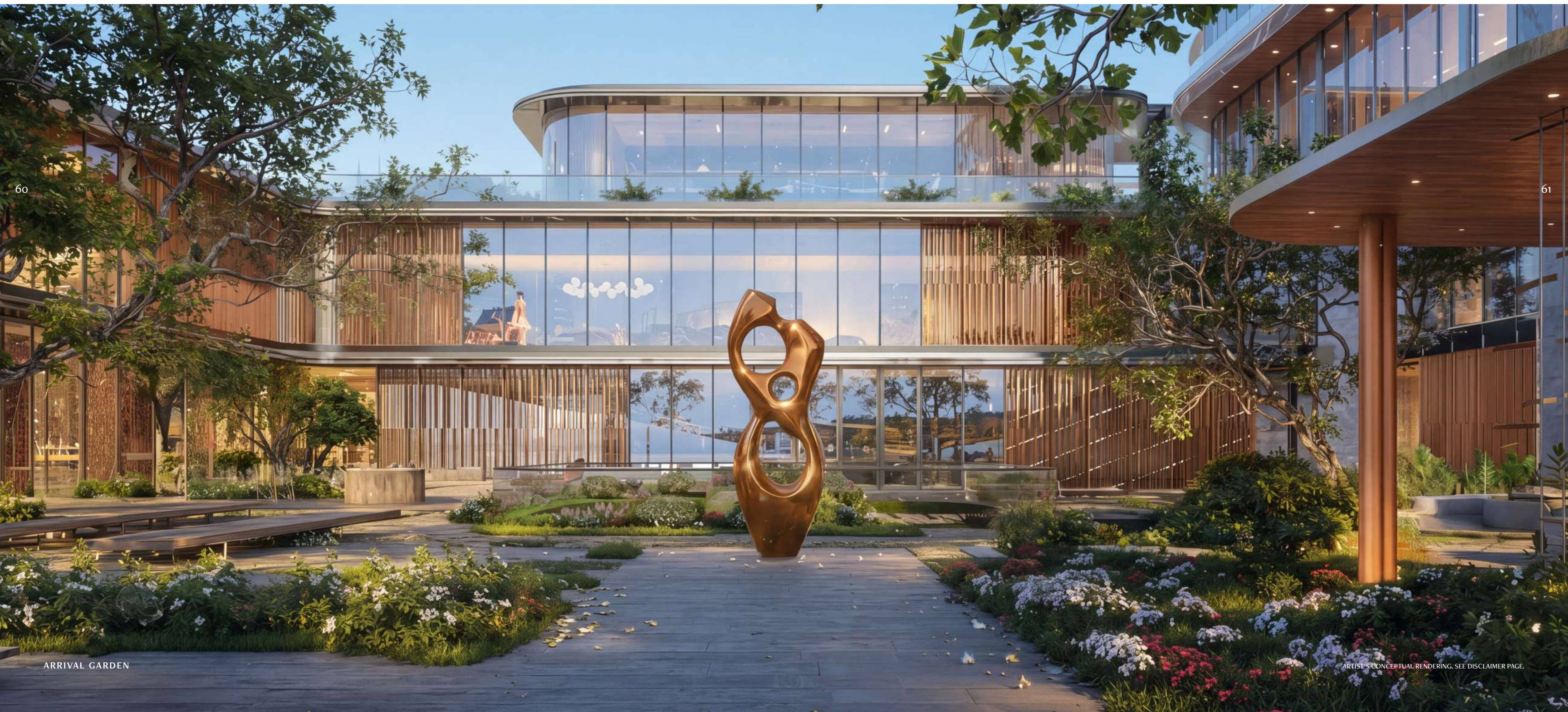
A thoughtful expression of well-being, inspired by ritual, renewal, and mindful living.

Wellness Traditions.

# A Journey Within A Home Beyond

Welcoming spaces for gathering and relaxation set the tone from the moment of arrival. An elegant reception, relaxed lobby lounge, and signature dining venues create places to pause, connect, and ease into the rhythm of the tower.

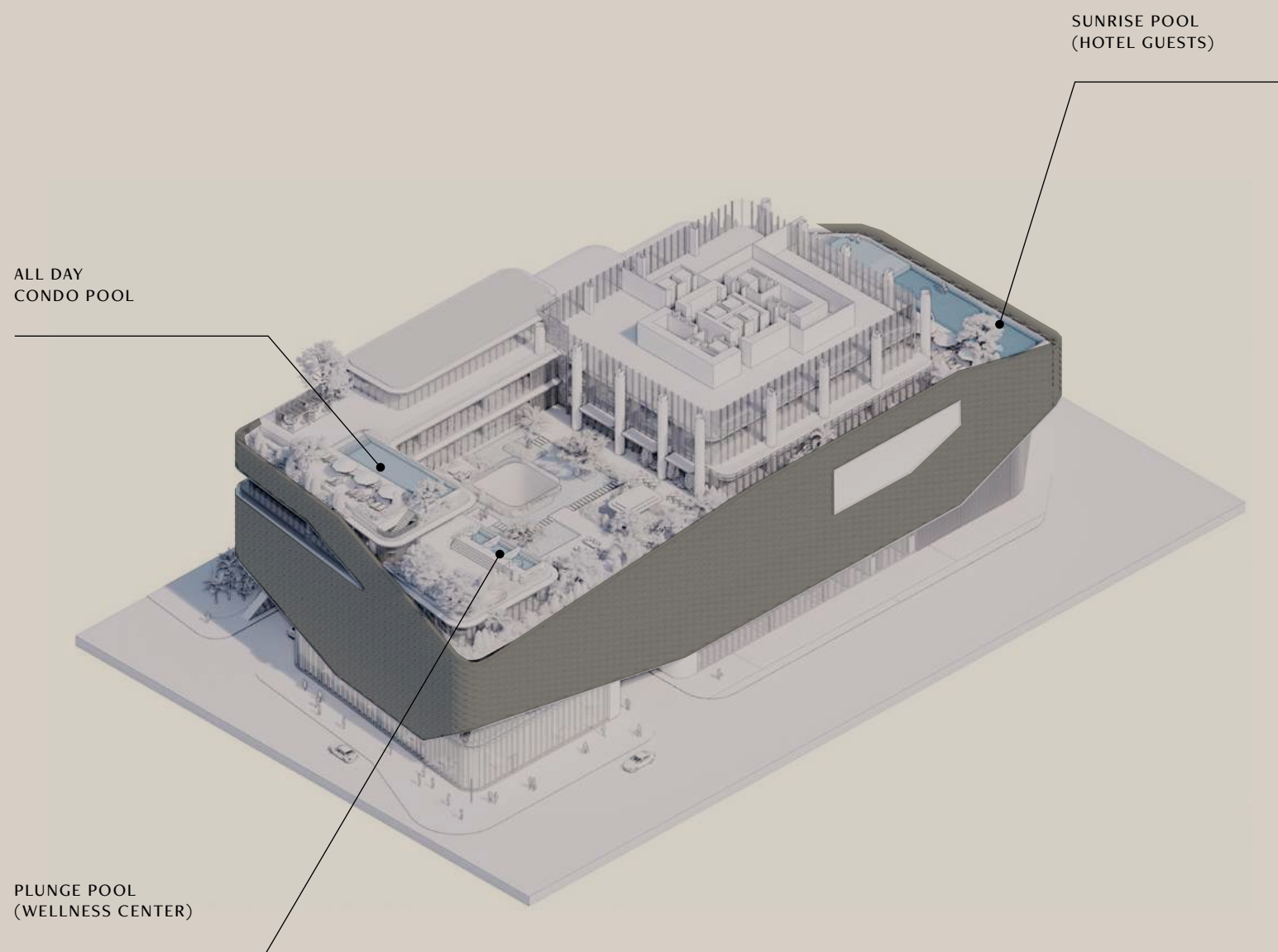
Wellness is woven into daily life. Sunlit terraces, a generous pool deck, and quiet pavilion spaces invite moments of rest and reflection, while the Vitality Center offers spa treatments, hydrotherapy, fitness and yoga studios, and dedicated spaces for meditation and renewal.





## A Life in Balance by Anantara

# A Sanctuary of Privacy



Discretion is woven into the experience of living here, creating a natural sense of calm and seclusion throughout. Through thoughtful planning, layered design, and a gentle relationship between indoors and out, each space feels quietly protected. It's an atmosphere of ease and retreat, where comfort is shaped by discretion.

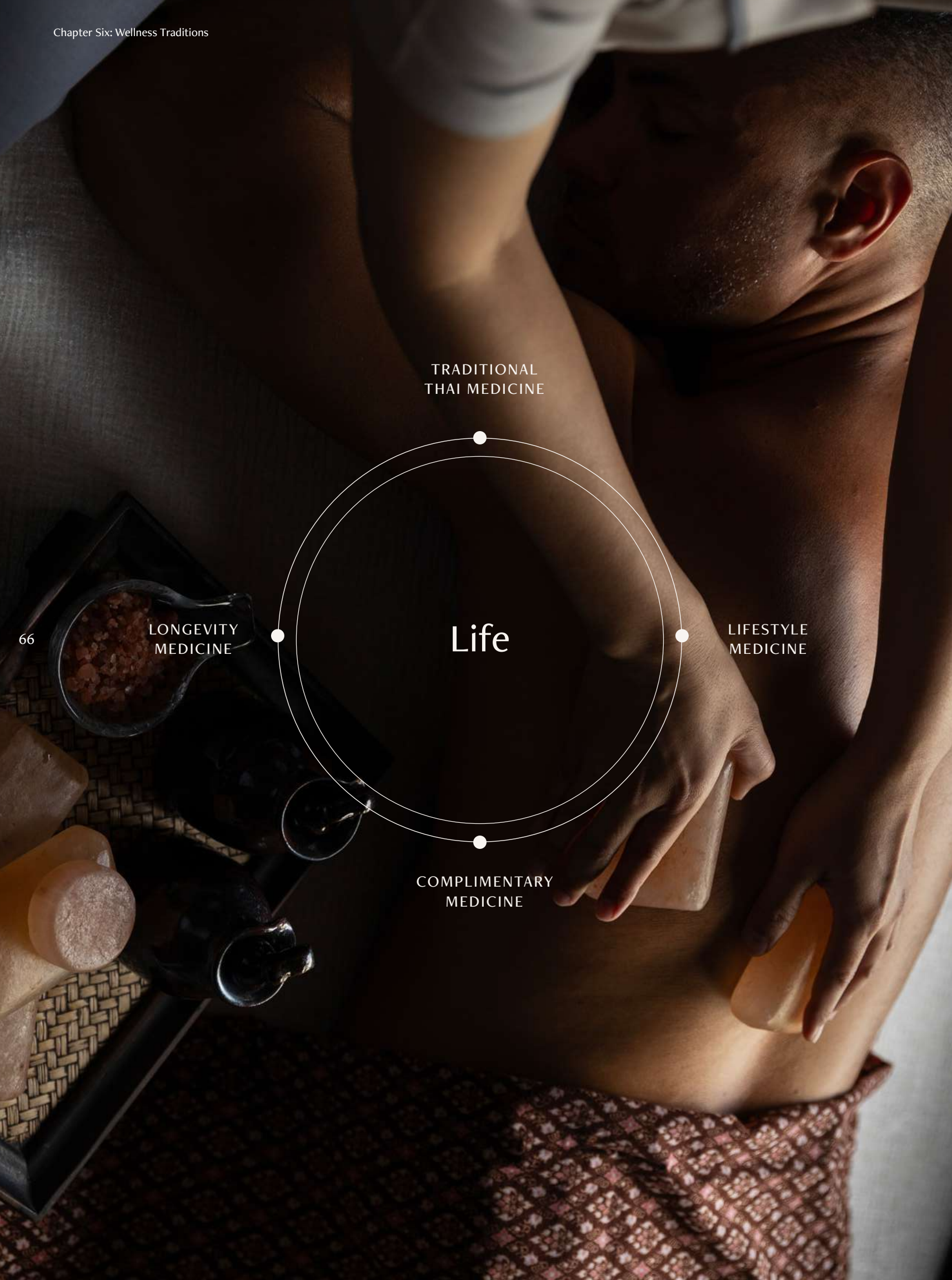


## A Life in Balance by Anantara

# The Art & Science of Well-being

True well-being is both an art and a science, a careful balance of ancient wisdom and modern medicine, of what can be measured and what can only be felt. At Anantara Residences Miami, we have brought together four pillars of health that work in harmony to support the whole person: body, mind, and spirit.

With effortless access to these transformative services, residents are invited to embrace a more considered way of living, where wellbeing becomes not an occasion, but a beautifully integrated part of every day.



TRADITIONAL  
THAI MEDICINE

Life

LIFESTYLE  
MEDICINE

COMPLIMENTARY  
MEDICINE

LONGEVITY  
MEDICINE

### LONGEVITY MEDICINE

Diagnostics and Treatments for Rejuvenation and Graceful Ageing. Longevity medicine is in service to helping us live a high-quality life for longer. Advanced diagnostics can indicate future health risks and pin-point areas where there may be current health concerns or genetic challenges.

### COMPLEMENTARY MEDICINE

Holistic Therapies and Experiences that Empower Wellbeing. Holistic therapies support balanced health and are preventative by nature, so they are a wonderful complement to traditional Western medicine. Our complementary therapies provide a well rounded approach to wellbeing and empower you with mind-body techniques and other practices for living wellness every day.

### TRADITIONAL THAI MEDICINE

Food, Herbs and Spiritual Healing for One's Individual Constitution. Thai Traditional Medicine is an approach to wellness wisdom that has been handed down through seven centuries. This method of healing considers the characteristics of a whole human — physical, emotional and spiritual. When out of balance, dimensions of our wellbeing suffer, however vitality can be restored and uplifted with a tailored approach through food, herbs and healing methods.

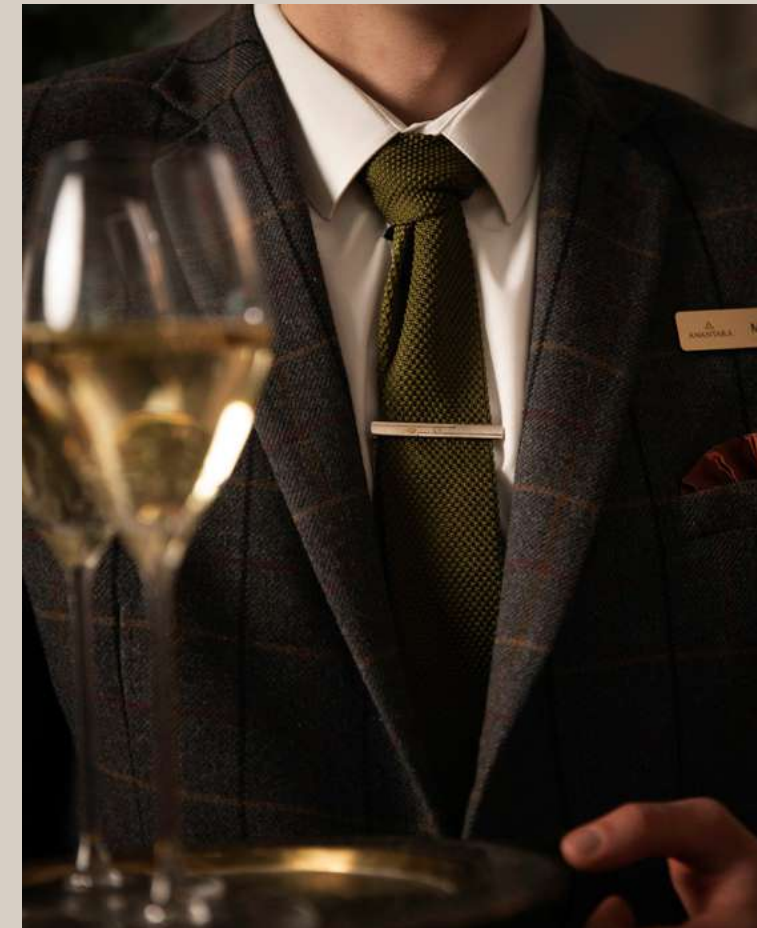
### LIFESTYLE MEDICINE

Practices that Elevate All Dimensions of Health and Vitality. Lifestyle Medicine is an evidence-based process that rests upon the six key pillars of eating well, active movement, restorative sleep, stress management, positive social connection and the reduction of harmful substances. Thoughtfully woven touch points make eating, sleeping, moving and social life effortless.



CHAPTER SEVEN

# HOSPITALITY



69

SIGNATURE EXPERIENCES

---

Anantara hospitality is defined by warmth, intuition, and a deep sense of place. It transforms every arrival, every gesture, and every detail into something personal, immersive, and quietly unforgettable.



PLUNGE POOL

ARTIST'S CONCEPTUAL RENDERING. SEE DISCLAIMER PAGE.

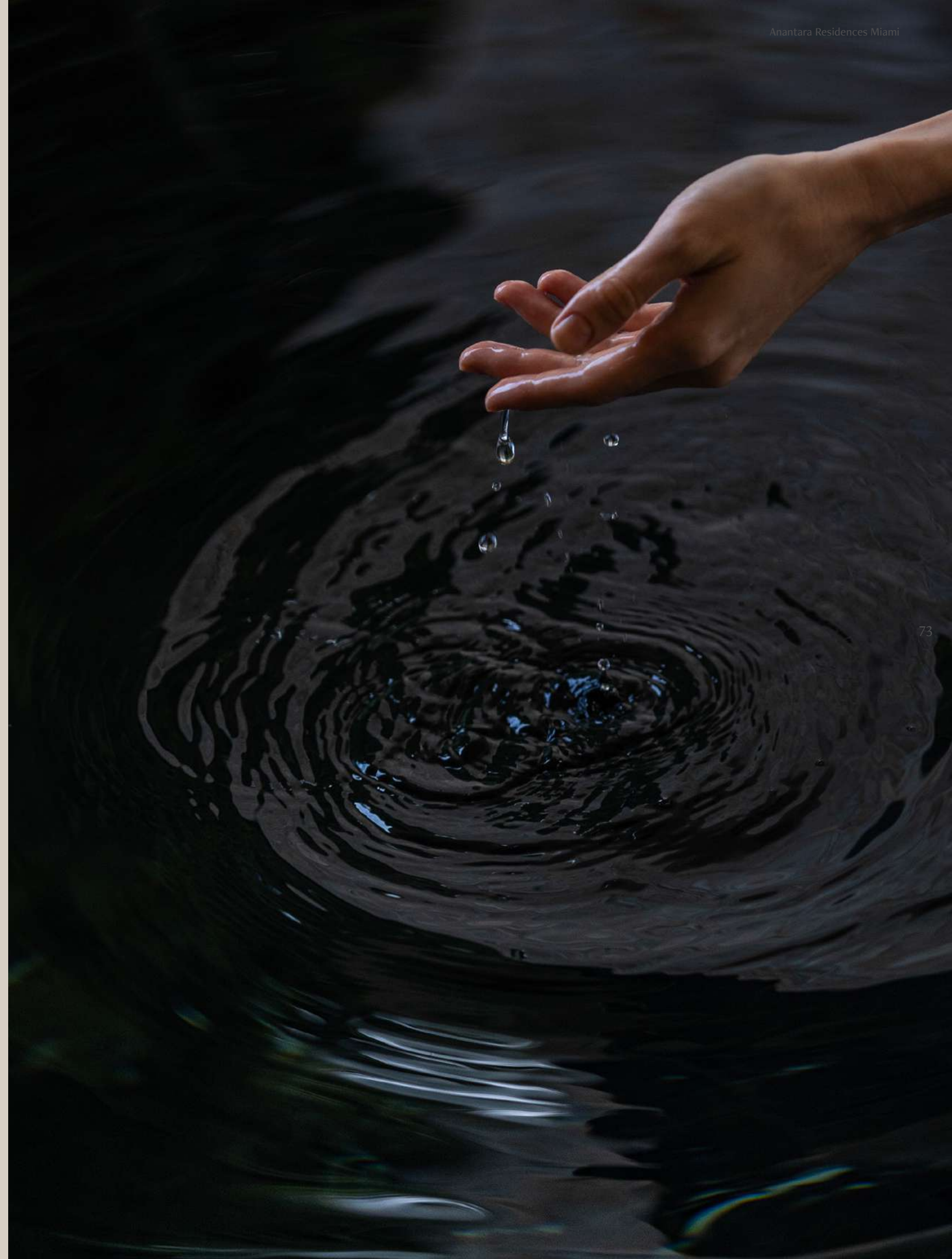
## Anantara Service Philosophy

---

Guided by the Thai tradition of ‘nam jai’, a heartfelt generosity that transforms service into an art, each experience is crafted with care and intention.



Nam Jai (น้ำใจ) translates to “water from the heart.” In Thai culture, it represents a spirit of selfless generosity, kindness, and genuine care for others. Within the Anantara philosophy, Nam Jai expresses the idea that hospitality should come naturally from the heart. It reflects a service approach that is warm, intuitive, and deeply personal, where team members anticipate needs, offer thoughtful gestures, and create meaningful connections. Rather than simply delivering service, Nam Jai embodies a sincere desire to enrich another person’s experience, ensuring that every interaction feels authentic, gracious, and memorable.



## Service, Reimagined as Experience

At Anantara, service is guided by a spirit of genuine hospitality and thoughtful attention. Every interaction is an opportunity to create something meaningful, a moment of discovery, a gesture of care, or an experience that feels personal and unexpected.



LAYAN LIFE BY ANANTARA



TRAVEL & LEISURE WORLD'S BEST AWARDS, 2025

Anantara brand in Top 10 Best Hotel Brands globally



LAYAN RESIDENCES BY ANANTARA



CONDE NAST TRAVELER READER'S CHOICE AWARD

33 Wins across US & UK



ANANTARA NEW YORK PALACE BUDAPEST HOTEL



MICHELIN 2025

11 Michelin Keys Including 2 hotels in Europe

Anantara New York Palace Budapest Hotel

Anantara Villa Padierna Palace Benahavis Marbella Resort



EDVARD AT ANANTARA PALAIS HANSEN VIENNA



MICHELIN STAR RESTAURANTS

3 Michelin Star Restaurants in Europe

EDVARD at Anantara Palais Hansen Vienna

Hotel INEO at Anantara Palazzo Naiadi Rome Hotel

The White Room at Anantara Grand Hotel

Krasnapolsky Amsterdam



CRAFT

VISION

PURPOSE

CHAPTER EIGHT

# COLLECTIVE



77

THE TEAM

---

A collective of shared vision and distinct expertise, brought together to shape something extraordinary.



## DEVELOPER:

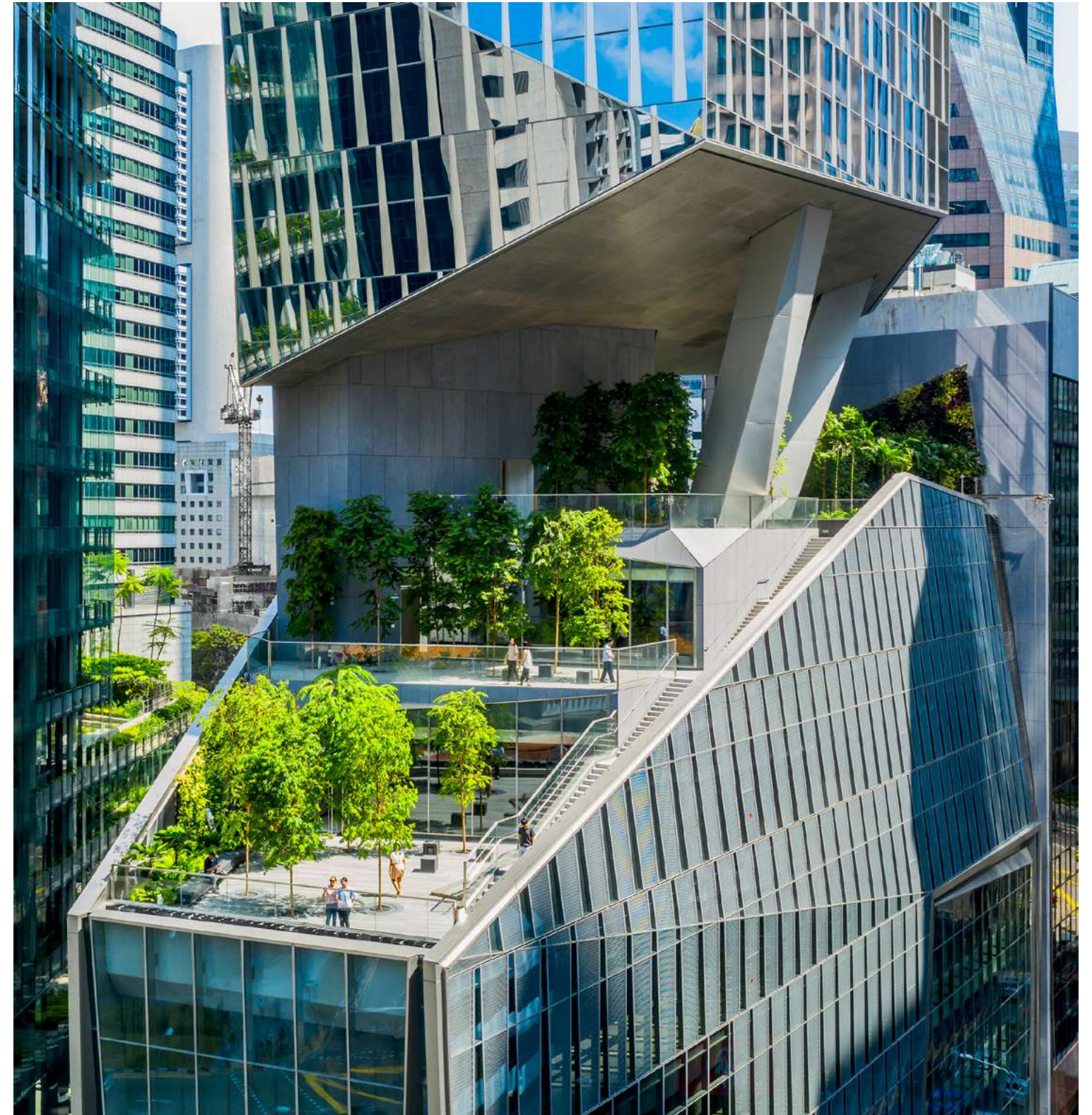
## One Thousand Group

Louis Birdman, Michael Konig, and Kevin Venger form One Thousand Group, a Miami-based partnership of developers known for shaping some of the city's most iconic residential landmarks. With deep local roots and a global perspective, the group is united by a singular vision: to create distinctive, design-led developments that redefine luxury living.

Driven by a relentless pursuit of excellence, One Thousand Group collaborates with the world's most celebrated architects and designers to bring one-of-a-kind buildings to life in prime, culturally connected locations. Their work is defined by innovation, precision, and a commitment to creating experiences that resonate far beyond architecture.

Most notably, the group delivered One Thousand Museum, the first and final residential skyscraper designed by the late Dame Zaha Hadid, an architectural landmark that set a new benchmark for ultra-luxury living in Miami. This legacy continues with Villa Miami, a waterfront project

that further elevates the city's residential landscape, and with Anantara Residences Miami, which introduces Anantara's globally renowned philosophy of experiential living to North America for the first time. Together, these projects reflect a forward-thinking approach, one that not only defines the skyline, but reshapes the way people live within it.



ARCHITECT:

## Kohn Pedersen Fox Associates PC

KPF transforms cities through impactful design, collaborating closely with the world's most forward-thinking clients to create high performing, carefully crafted buildings that are unique to their physical, social, and environmental contexts.

The firm's extensive portfolio spans more than 40 countries and includes a wide range of projects from commercial and residential buildings to civic and cultural spaces to education, research, and healthcare facilities. Driven by individual design solutions, rather than a predetermined style, KPF endeavors to design lasting buildings that mitigate their environmental impact and enhance the well-being of the communities they serve.

**KPF**



82

83

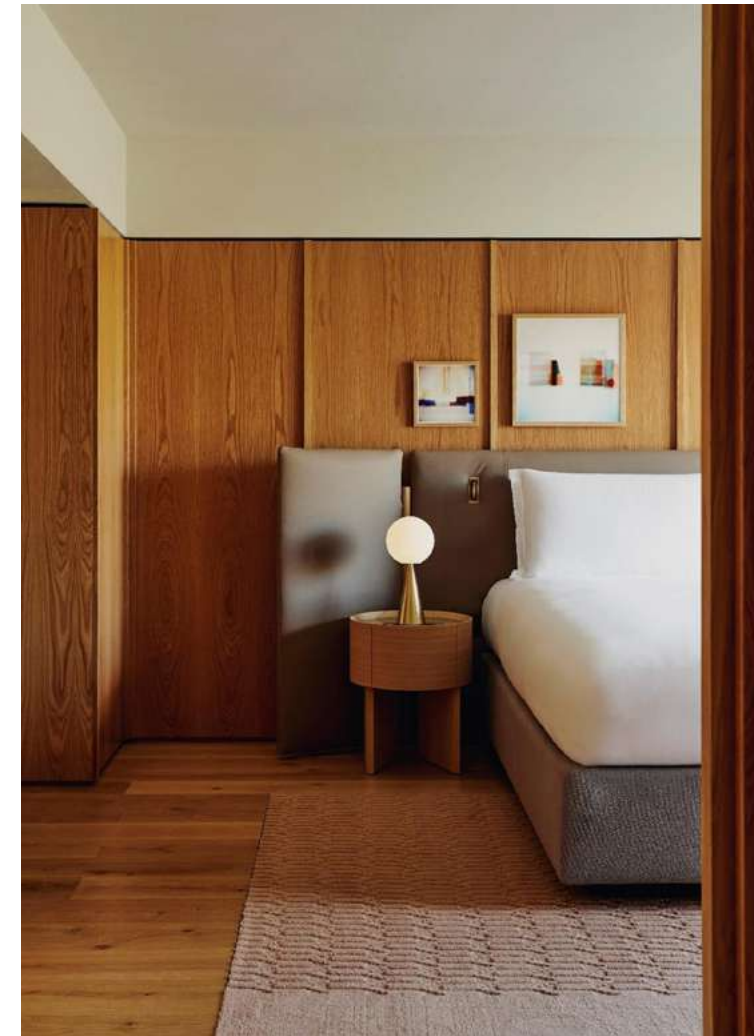
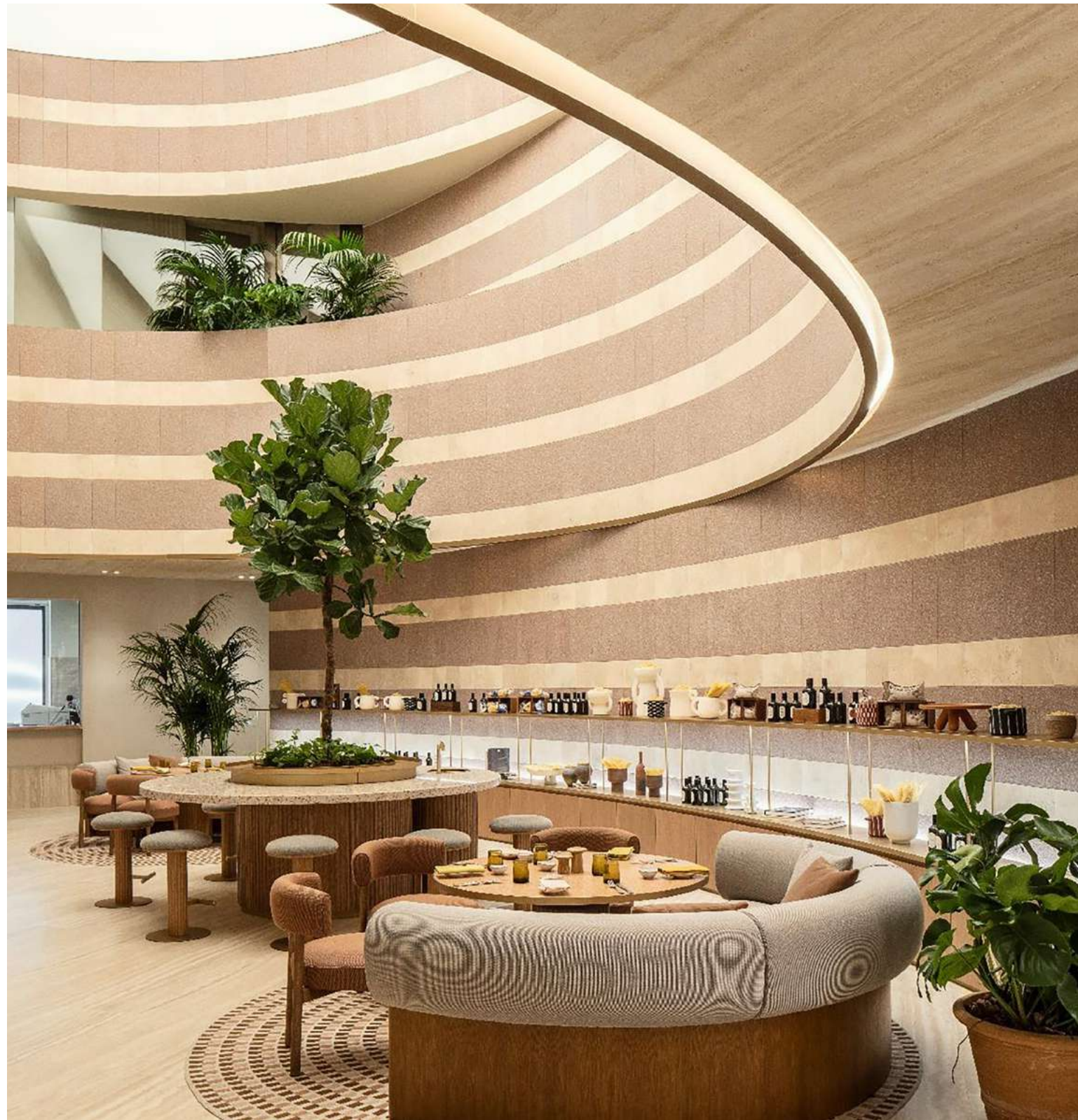
LOCAL ARCHITECT:

## ODP Architecture & Design

ODP Architecture & Design is a Miami-based practice recognized for delivering thoughtful, contextually responsive architecture across South Florida’s evolving urban landscape. With a strong foundation in technical expertise and local knowledge, ODP plays a critical role in translating visionary design into buildable, high-performing structures.

Known for its collaborative approach, the firm works closely with global design teams to ensure each project is seamlessly integrated into its environment while meeting the highest standards of execution. ODP bridges international design vision with local insight, bringing precision, continuity, and a deep understanding of Miami’s architectural fabric to the development.





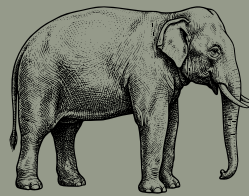
## INTERIORS:

## Studio Urquiola

Studio Urquiola is an internationally acclaimed design practice founded by Patricia Urquiola and based in Milan. The studio works across architecture, interiors, product design, and art direction, with a multidisciplinary approach that merges creativity, research, and craftsmanship.

Known for its distinctive use of color, materiality, and form, Studio Urquiola creates spaces that are both expressive and deeply human. Its work reflects a balance between innovation and tradition, often drawing on cultural references and artisanal techniques to produce environments that feel thoughtful, tactile, and enduring.

URQUIOLA



(A) WE ARE PLEDGED TO THE LETTER AND SPIRIT OF THE U.S. POLICY FOR ACHIEVEMENT OF EQUAL HOUSING OPPORTUNITY THROUGHOUT THE NATION. WE ENCOURAGE AND SUPPORT AN AFFIRMATIVE ADVERTISING AND MARKETING PROGRAM IN WHICH THERE ARE NO BARRIERS TO OBTAINING HOUSING BECAUSE OF RACE, COLOR, RELIGION, SEX, HANDICAP, FAMILIAL STATUS OR NATIONAL ORIGIN. (B) This is not intended to be an offer to sell, or solicitation to buy, condominium units to residents of any jurisdiction where prohibited by law, and your eligibility for purchase will depend upon your state of residency. (C) This offering is made only by the prospectus for the condominium and no statement should be relied upon if not made in the prospectus. (D) One Thousand Group, LLC ("Named Party") is not the project Developer. This Condominium is being developed by Tower 36 Owner, LLC ("Developer"). Any and all statements, disclosures and/or representations shall be deemed made by Developer and not by Named Party and any purchaser agrees to look solely to Developer (and not to Named Party and/or any of its affiliates or principals) with respect to any and all matters relating to the marketing and/or development of the Condominium and with respect to the sales of units in the Condominium. (E) The sketches, renderings, graphic materials, plans, specifications, terms, conditions and statements contained in this brochure are proposed only, and the Developer reserves the right to modify, revise or withdraw any or all of same in its sole discretion and without prior notice. All improvements, designs and construction are subject to first obtaining the appropriate federal, state and local permits and approvals for same. (F) These drawings and depictions are conceptual only and are for the convenience of reference and including artists renderings. They should not be relied upon as representations, express or implied, of the final detail of the residences or the Condominium. The developer expressly reserves the right to make modifications, revisions, and changes it deems desirable in its sole and absolute discretion. (G) All depictions of appliances, counters, soffits, floor coverings and other matters of detail, including, without limitation, items of finish and decoration, are conceptual only and are not necessarily included in each Unit. (H) The photographs contained in this brochure may be stock photography or have been taken off-site and are used to depict the spirit of the lifestyles to be achieved rather than any that may exist or that may be proposed, and are merely intended as illustrations of the activities and concepts depicted therein. (I) The Condominium views will vary depending on the Unit purchased. No view is guaranteed. (J) All residence features and building amenities are subject to change, including, without limitation, changes in manufacturers, brands, amenities, services and/or the design team. Certain finishes, furnishings and services, may not be included with the purchase of a unit, and if provided, may be upgrades or extras and require additional payments. Consult the Condominium Documents and Agreement for a description of those features/items which are to be included in the units. (K) Dimensions and square footages and ceiling heights are approximate and may vary with actual construction. Floor plans and development plans are subject to change. (L) Neighborhood attractions, and/or venues referenced and/or identified in this publication are off-site and not controlled by the Developer. They are accurate as of the date of this publication, however there is no guarantee that they will continue to exist or that there won't be changes and/or substitutions of same. (M) The project graphics, renderings and text provided herein are copyrighted works owned by the developer. All rights reserved. Unauthorized reproduction, display or other dissemination of such materials is strictly prohibited and constitutes copyright infringement. (N) No real estate broker is authorized to make any representations or other statements regarding the projects, and no agreements with, deposits paid to or other arrangements made with any real estate broker are or shall be binding on the developer. (O) The purchase of real estate is a significant decision. Developer makes no representations concerning any potential for future profit, any future appreciation in value, any income potential, tax advantages, depreciation or investment potential regarding acquiring a unit, nor any monetary or financial advantages related to the same. No statements or representations are made regarding the economic or tax benefits to be derived, if any, by the buyer from acquiring and/or owning a unit. (P) All prices are subject to change at any time and without notice, and do not include optional features or premiums for upgraded units. From time to time, price changes may have occurred that are not yet reflected on this brochure. Please check with the sales center for the most current pricing.