

2200 BRICKELL

TYPE A

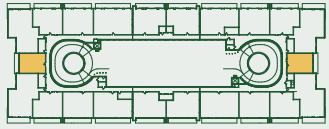
UNITS 06, 17

1 BEDROOM + DEN

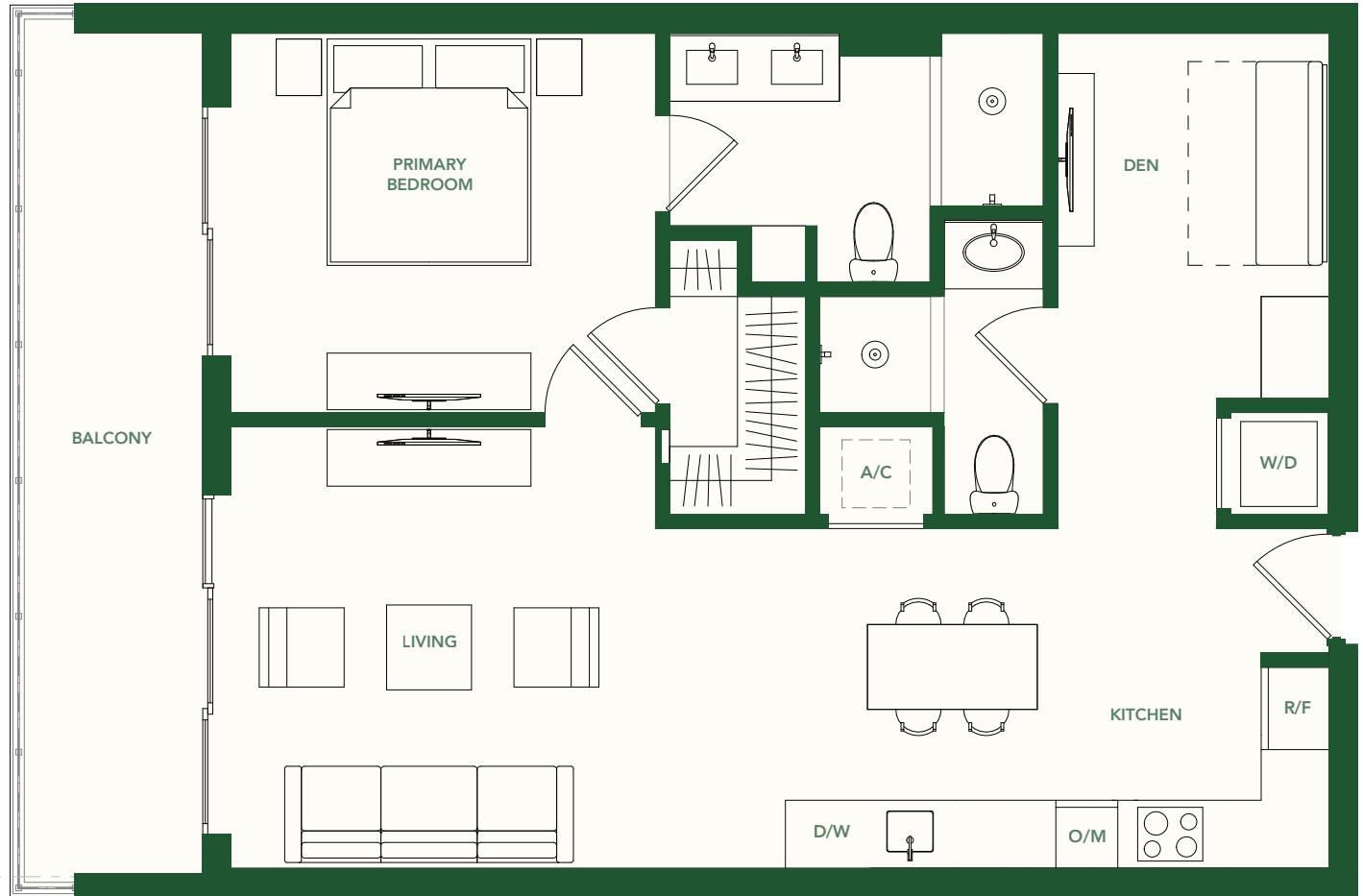
2 BATHROOMS

LEVELS 2 - 5

INTERIOR	864 SF / 80 M ²
BALCONY	124 SF / 12 M ²
TOTAL	988 SF / 92 M ²



BRICKELL AVE.



These drawings are conceptual only and are for the convenience of reference. They should not be relied upon as representations, express or implied, of the final detail of the residences. Units shown are examples of unit types and may not depict actual units. Stated square footages are ranges for a particular unit type and are measured to the exterior boundaries of the exterior walls and the centerline of interior demising walls and in fact vary from the area that would be determined by using the description and definition of the unit set forth in the declaration (which generally only includes the interior airspace between the perimeter walls and excludes interior structural components). Note that measurements of rooms set forth on this floorplan are generally taken at the greatest points of each given room (as if the room were a perfect rectangle), without regards for any cutouts. Accordingly, the area of the actual room will typically be smaller than the product obtained by multiplying the stated length times width. All dimensions are approximate and may vary with actual construction, and all floor plans and development plans are subject to change.

2200 BRICKELL

TYPE B

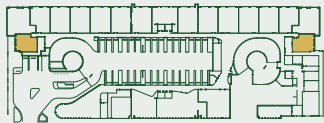
UNITS 101, 117

1 BEDROOM

1 BATHROOM

GROUND LEVEL

INTERIOR	592 SF / 55 M ²
TERRACE	170 SF / 16 M ²
TOTAL	762 SF / 71 M ²



BRICKELL AVE.



These drawings are conceptual only and are for the convenience of reference. They should not be relied upon as representations, express or implied, of the final detail of the residences. Units shown are examples of unit types and may not depict actual units. Stated square footages are ranges for a particular unit type and are measured to the exterior boundaries of the exterior walls and the centerline of interior demising walls and in fact vary from the area that would be determined by using the description and definition of the unit set forth in the declaration (which generally only includes the interior airspace between the perimeter walls and excludes interior structural components). Note that measurements of rooms set forth on this floorplan are generally taken at the greatest points of each given room (as if the room were a perfect rectangle), without regard for any cutouts. Accordingly, the area of the actual room will typically be smaller than the product obtained by multiplying the stated length times width. All dimensions are approximate and may vary with actual construction, and all floor plans and development plans are subject to change.

2200 BRICKELL

TYPE C

UNITS 04, 08, 15, 19

2 BEDROOMS

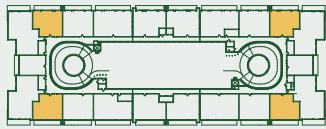
2 BATHROOMS

LEVEL 2 - 5

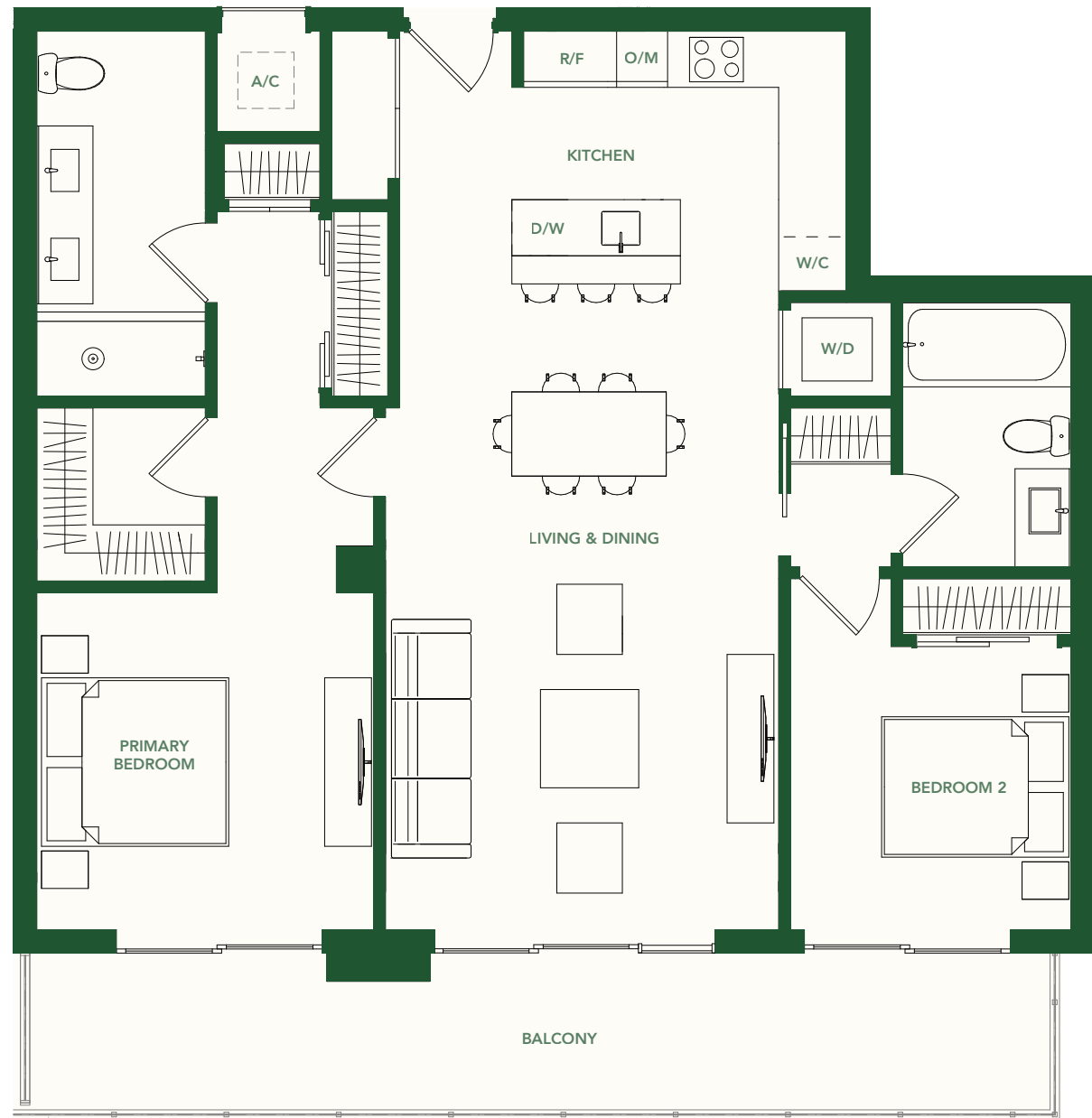
INTERIOR 1,189 SF / 110 M²

BALCONY 215 SF / 20 M²

TOTAL 1,404 SF / 130 M²



BRICKELL AVE.



These drawings are conceptual only and are for the convenience of reference. They should not be relied upon as representations, express or implied, of the final detail of the residences. Units shown are examples of unit types and may not depict actual units. Stated square footages are ranges for a particular unit type and are measured to the exterior boundaries of the exterior walls and the centerline of interior demising walls and in fact vary from the area that would be determined by using the description and definition of the unit set forth in the declaration (which generally only includes the interior airspace between the perimeter walls and excludes interior structural components). Note that measurements of rooms set forth on this floorplan are generally taken at the greatest points of each given room (as if the room were a perfect rectangle), without regard for any cutouts. Accordingly, the area of the actual room will typically be smaller than the product obtained by multiplying the stated length times width. All dimensions are approximate and may vary with actual construction, and all floor plans and development plans are subject to change.

2200
BRICKELL

TYPE E

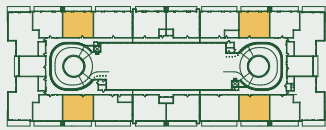
UNITS 03, 09, 14, 20

2 BEDROOMS + DEN

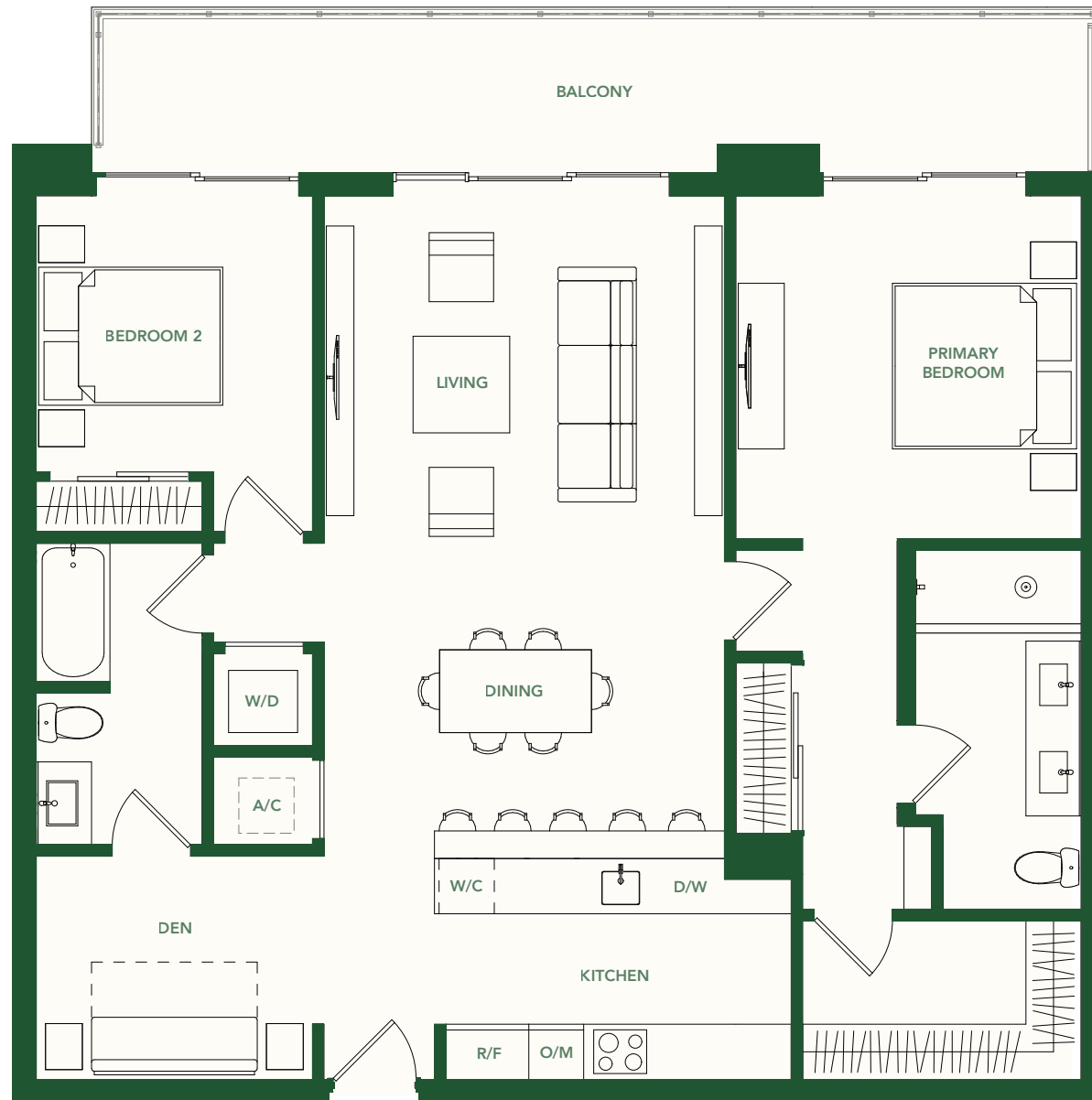
2 BATHROOMS

LEVELS 2 - 5

INTERIOR	1,302 SF / 121 M ²
BALCONY	213 SF / 20 M ²
TOTAL	1,515 SF / 141 M ²



BRICKELL AVE.



These drawings are conceptual only and are for the convenience of reference. They should not be relied upon as representations, express or implied, of the final detail of the residences. Units shown are examples of unit types and may not depict actual units. Stated square footages are ranges for a particular unit type and are measured to the exterior boundaries of the exterior walls and the centerline of interior demising walls and in fact vary from the area that would be determined by using the description and definition of the unit set forth in the declaration (which generally only includes the interior airspace between the perimeter walls and excludes interior structural components). Note that measurements of rooms set forth on this floorplan are generally taken at the greatest points of each given room (as if the room were a perfect rectangle), without regards for any cutouts. Accordingly, the area of the actual room will typically be smaller than the product obtained by multiplying the stated length times width. All dimensions are approximate and may vary with actual construction, and all floor plans and development plans are subject to change.

MARIA LARGO **PL&E**
DEVELOPER/BUILDER PROJECTS

2200 BRICKELL

TYPE F

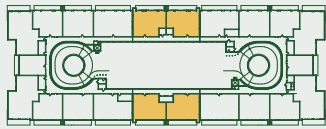
UNITS 01, 11, 12, 22

2 BEDROOMS + DEN

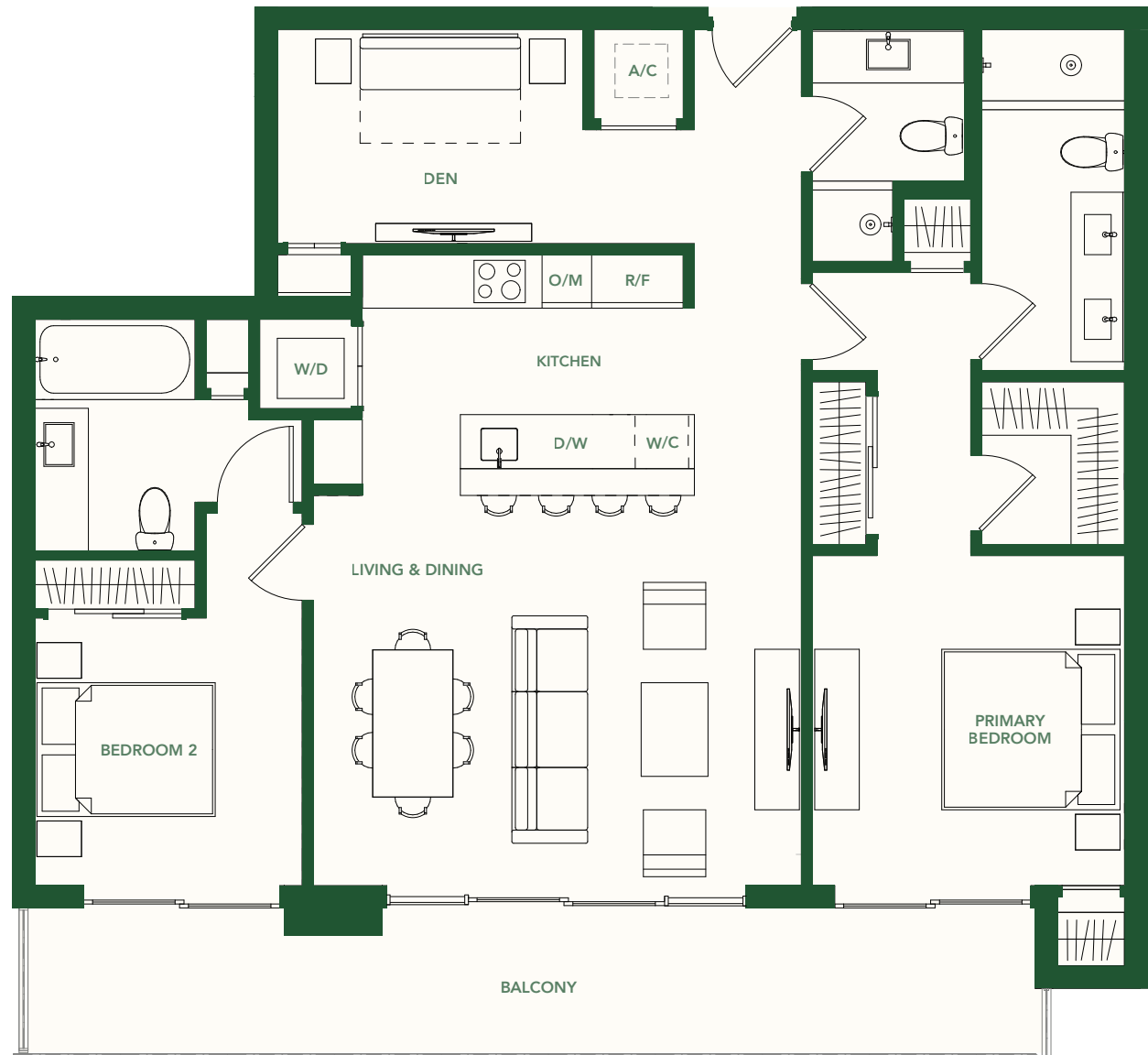
3 BATHROOMS

LEVELS 2 - 5

INTERIOR	1,317 SF / 122 M ²
BALCONY	210 SF / 20 M ²
TOTAL	1,527 SF / 142 M ²



BRICKELL AVE.



These drawings are conceptual only and are for the convenience of reference. They should not be relied upon as representations, express or implied, of the final detail of the residences. Units shown are examples of unit types and may not depict actual units. Stated square footages are ranges for a particular unit type and are measured to the exterior boundaries of the exterior walls and the centerline of interior demising walls and in fact vary from the area that would be determined by using the description and definition of the unit set forth in the declaration (which generally only includes the interior airspace between the perimeter walls and excludes interior structural components). Note that measurements of rooms set forth on this floorplan are generally taken at the greatest points of each given room (as if the room were a perfect rectangle), without regard for any cutouts. Accordingly, the area of the actual room will typically be smaller than the product obtained by multiplying the stated length times width. All dimensions are approximate and may vary with actual construction, and all floor plans and development plans are subject to change.

2200 BRICKELL

TYPE G

UNIT 13

3 BEDROOMS

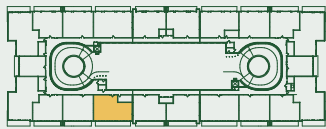
3 BATHROOMS

LEVELS 2 - 5

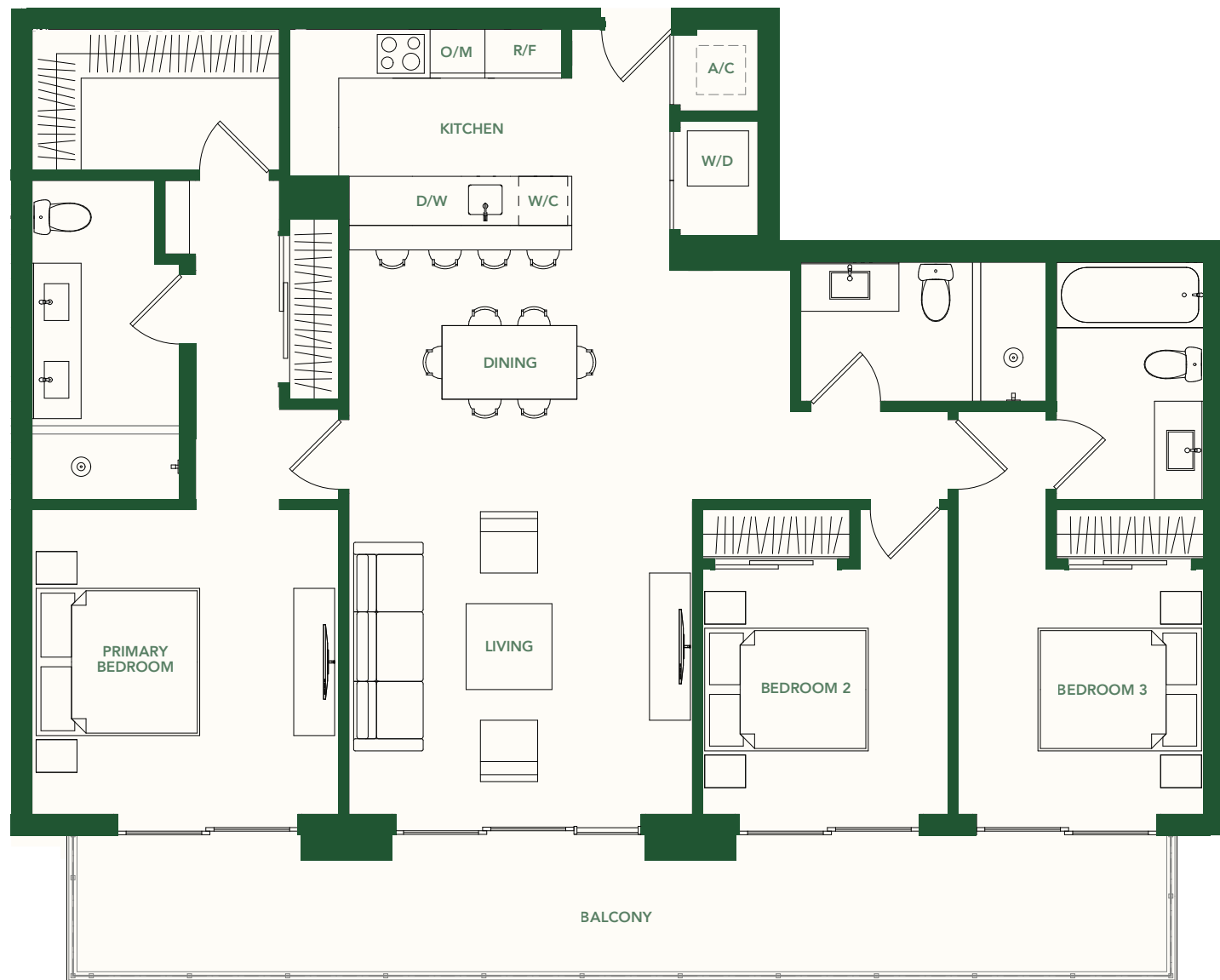
INTERIOR 1,470 SF / 137 M²

BALCONY 256 SF / 24 M²

TOTAL 1,726 SF / 161 M²



BRICKELL AVE.



These drawings are conceptual only and are for the convenience of reference. They should not be relied upon as representations, express or implied, of the final detail of the residences. Units shown are examples of unit types and may not depict actual units. Stated square footages are ranges for a particular unit type and are measured to the exterior boundaries of the exterior walls and the centerline of interior demising walls and in fact vary from the area that would be determined by using the description and definition of the unit set forth in the declaration (which generally only includes the interior airspace between the perimeter walls and excludes interior structural components). Note that measurements of rooms set forth on this floorplan are generally taken at the greatest points of each given room (as if the room were a perfect rectangle), without regards for any cutouts. Accordingly, the area of the actual room will typically be smaller than the product obtained by multiplying the stated length times width. All dimensions are approximate and may vary with actual construction, and all floor plans and development plans are subject to change.

ARIA LARGO **PLA E**
DEVELOPER/BUILDER PROJECTS

2200 BRICKELL

TYPE H

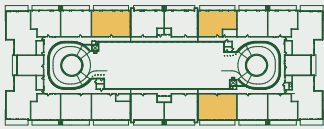
UNITS 02, 10, 21

3 BEDROOMS + DEN

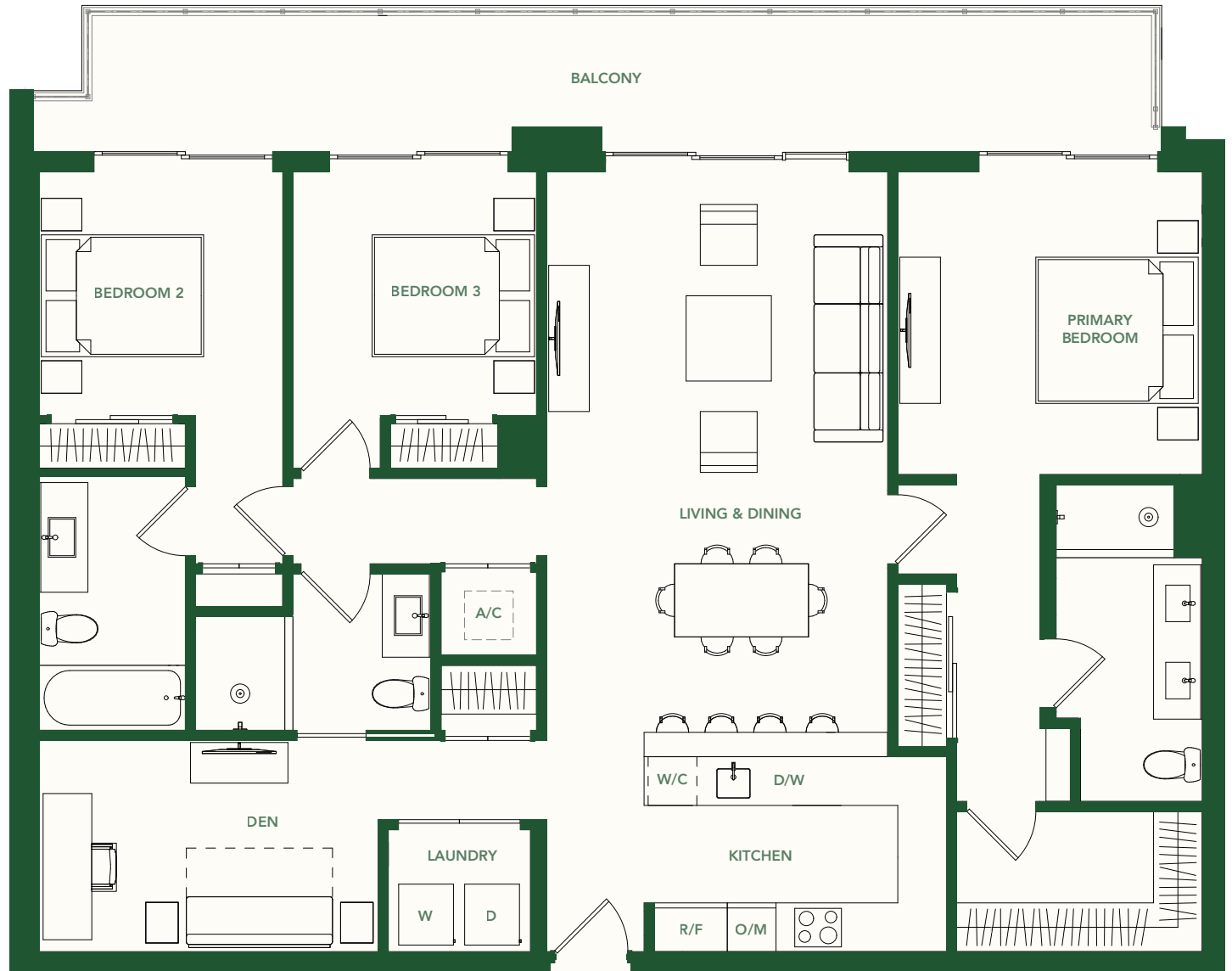
3 BATHROOMS

LEVELS 2 - 5

INTERIOR	1,652 SF / 152 M ²
BALCONY	259 SF / 24 M ²
TOTAL	1,911 SF / 177 M ²



BRICKELL AVE.



These drawings are conceptual only and are for the convenience of reference. They should not be relied upon as representations, express or implied, of the final detail of the residences. Units shown are examples of unit types and may not depict actual units. Stated square footages are ranges for a particular unit type and are measured to the exterior boundaries of the exterior walls and the centerline of interior demising walls and in fact vary from the area that would be determined by using the description and definition of the unit set forth in the declaration (which generally only includes the interior airspace between the perimeter walls and excludes interior structural components). Note that measurements of rooms set forth on this floorplan are generally taken at the greatest points of each given room (as if the room were a perfect rectangle), without regard for any cutouts. Accordingly, the area of the actual room will typically be smaller than the product obtained by multiplying the stated length times width. All dimensions are approximate and may vary with actual construction, and all floor plans and development plans are subject to change.

2200
BRICKELL

TYPE J

UNITS 05, 07, 18

3 BEDROOMS + DEN

3.5 BATHROOMS

LEVELS 3 - 5

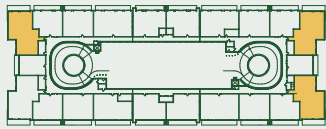
INTERIOR 1,818 SF / 169 M²

BALCONY 205 SF / 19 M²

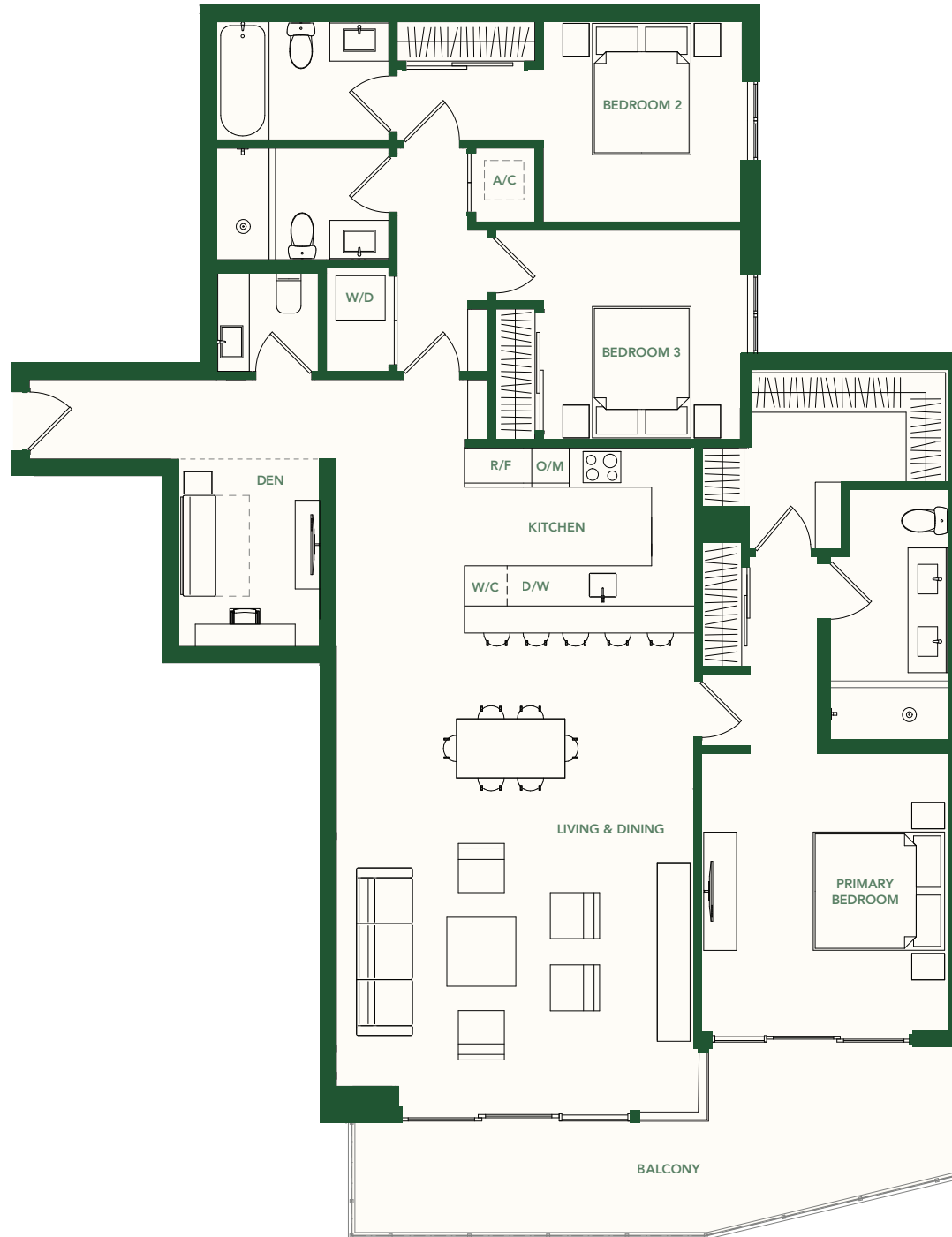
TOTAL 2,023 SF / 188 M²

UNITS 05, 07 - 1844 SF / 171 M²

UNIT 18 - 1818 SF / 169 M²



BRICKELL AVE.



These drawings are conceptual only and are for the convenience of reference. They should not be relied upon as representations, express or implied, of the final detail of the residences. Units shown are examples of unit types and may not depict actual units. Stated square footages are ranges for a particular unit type and are measured to the exterior boundaries of the exterior walls and the centerline of interior demising walls and in fact vary from the area that would be determined by using the description and definition of the unit set forth in the declaration (which generally only includes the interior airspace between the perimeter walls and excludes interior structural components). Note that measurements of rooms set forth on this floorplan are generally taken at the greatest points of each given room (as if the room were a perfect rectangle), without regards for any cutouts. Accordingly, the area of the actual room will typically be smaller than the product obtained by multiplying the stated length times width. All dimensions are approximate and may vary with actual construction, and all floor plans and development plans are subject to change.

MARIA LARGO **PL&E**
DEVELOPER/BUILDER PRODUCTS

2200 BRICKELL

TYPE J 1.1

UNIT 205

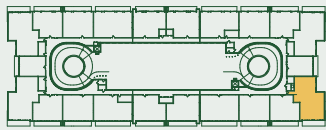
3 BEDROOMS + DEN

3.5 BATHROOMS

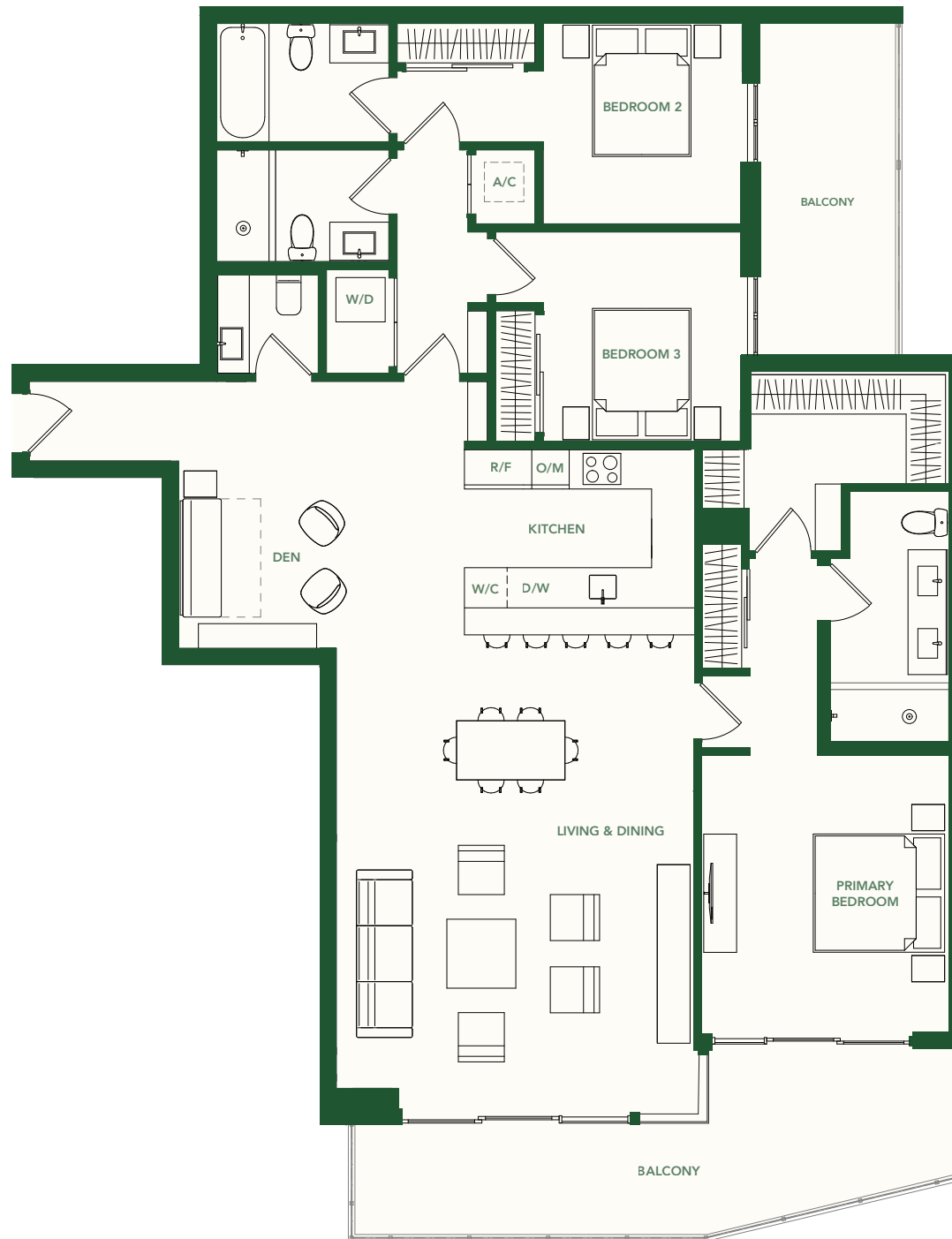
INTERIOR 1,818 SF / 169 M²

BALCONY 308 SF / 29 M²

TOTAL 2,126 SF / 198 M²



BRICKELL AVE.



These drawings are conceptual only and are for the convenience of reference. They should not be relied upon as representations, express or implied, of the final detail of the residences. Units shown are examples of unit types and may not depict actual units. Stated square footages are ranges for a particular unit type and are measured to the exterior boundaries of the exterior walls and the centerline of interior demising walls and in fact vary from the area that would be determined by using the description and definition of the unit set forth in the declaration (which generally only includes the interior airspace between the perimeter walls and excludes interior structural components). Note that measurements of rooms set forth on this floorplan are generally taken at the greatest points of each given room (as if the room were a perfect rectangle), without regards for any cutouts. Accordingly, the area of the actual room will typically be smaller than the product obtained by multiplying the stated length times width. All dimensions are approximate and may vary with actual construction, and all floor plans and development plans are subject to change.

MARIA LARGO **PL&E**
DEVELOPER/BUILDER PRODUCTS

2200 BRICKELL

TYPE J3

UNIT 16

3 BEDROOMS + DEN

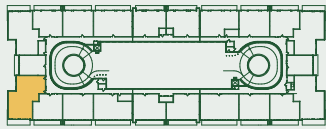
3.5 BATHROOMS

LEVELS 3 - 5

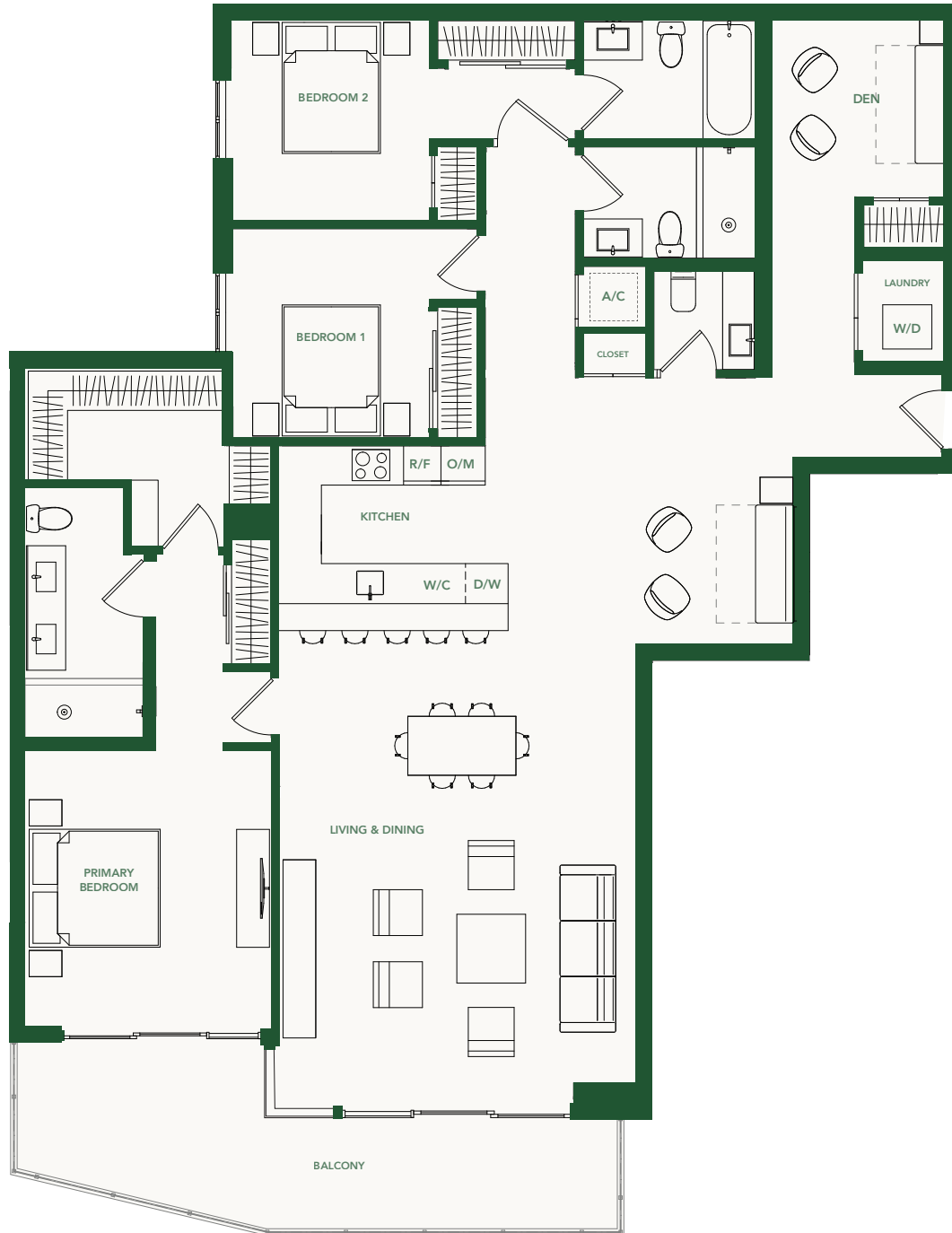
INTERIOR 2,000 SF / 186 M²

BALCONY 182 SF / 17 M²

TOTAL 2,182 SF / 203 M²



BRICKELL AVE.



These drawings are conceptual only and are for the convenience of reference. They should not be relied upon as representations, express or implied, of the final detail of the residences. Units shown are examples of unit types and may not depict actual units. Stated square footages are ranges for a particular unit type and are measured to the exterior boundaries of the exterior walls and the centerline of interior demising walls and in fact vary from the area that would be determined by using the description and definition of the unit set forth in the declaration (which generally only includes the interior airspace between the perimeter walls and excludes interior structural components). Note that measurements of rooms set forth on this floorplan are generally taken at the greatest points of each given room (as if the room were a perfect rectangle), without regards for any cutouts. Accordingly, the area of the actual room will typically be smaller than the product obtained by multiplying the stated length times width. All dimensions are approximate and may vary with actual construction, and all floor plans and development plans are subject to change.

2200 BRICKELL

TYPE J3.1

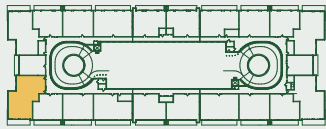
UNIT 16

3 BEDROOMS + DEN

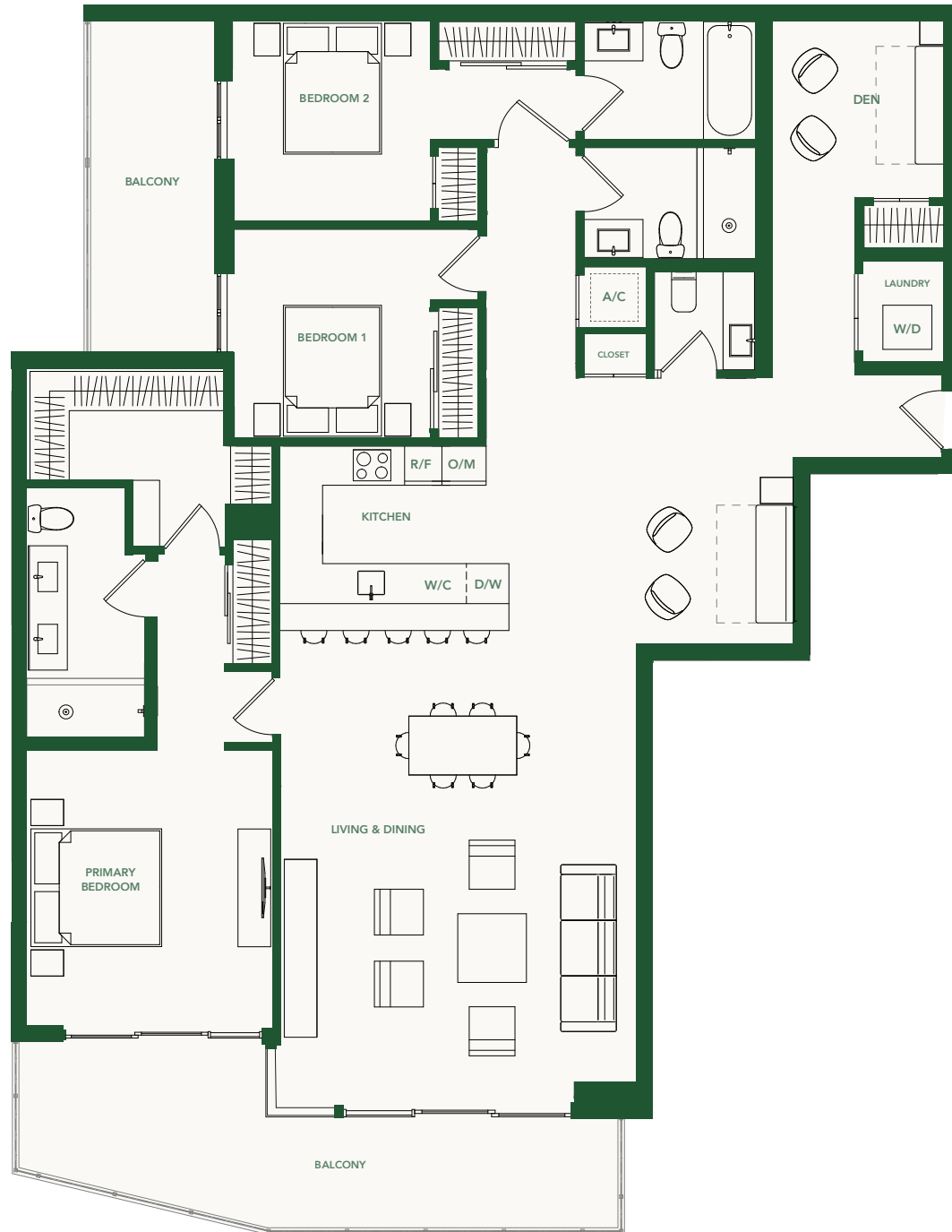
3.5 BATHROOMS

LEVEL 2

INTERIOR	2,000 SF / 186 M ²
BALCONY	307 SF / 29 M ²
TOTAL	2,307 SF / 215 M ²



BRICKELL AVE.



These drawings are conceptual only and are for the convenience of reference. They should not be relied upon as representations, express or implied, of the final detail of the residences. Units shown are examples of unit types and may not depict actual units. Stated square footages are ranges for a particular unit type and are measured to the exterior boundaries of the exterior walls and the centerline of interior demising walls and in fact vary from the area that would be determined by using the description and definition of the unit set forth in the declaration (which generally only includes the interior airspace between the perimeter walls and excludes interior structural components). Note that measurements of rooms set forth on this floorplan are generally taken at the greatest points of each given room (as if the room were a perfect rectangle), without regards for any cutouts. Accordingly, the area of the actual room will typically be smaller than the product obtained by multiplying the stated length times width. All dimensions are approximate and may vary with actual construction, and all floor plans and development plans are subject to change.

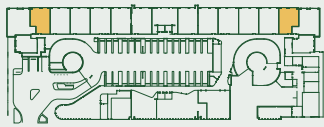
2200 BRICKELL

TYPE K

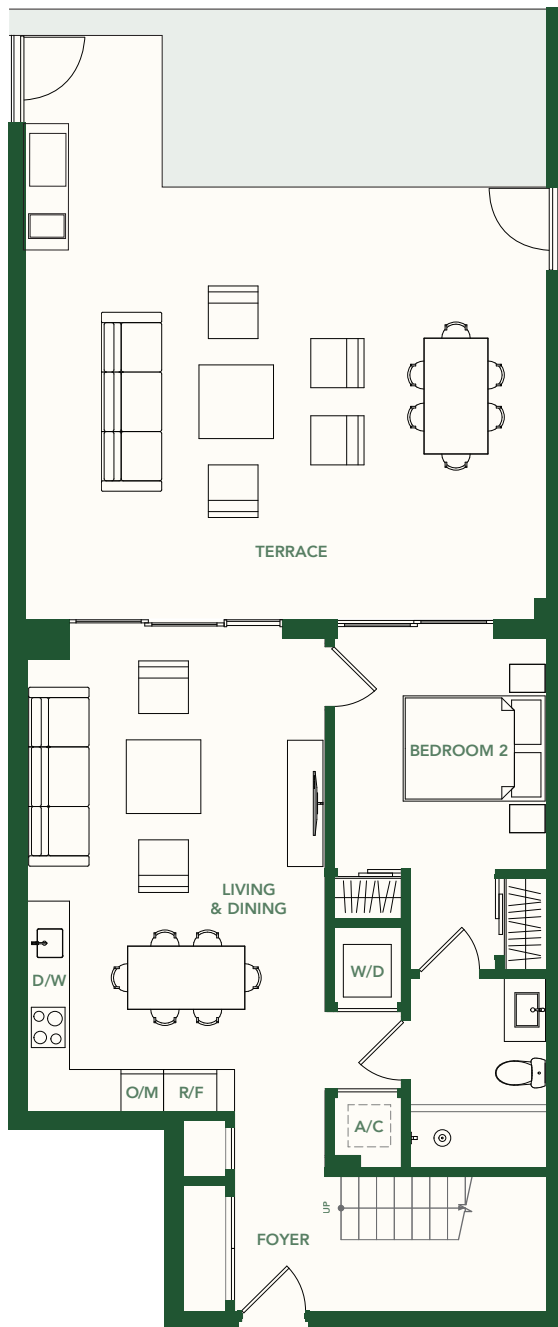
GARDEN VILLAS 103, 115

2 BEDROOMS
2 BATHROOMS
GROUND LEVEL

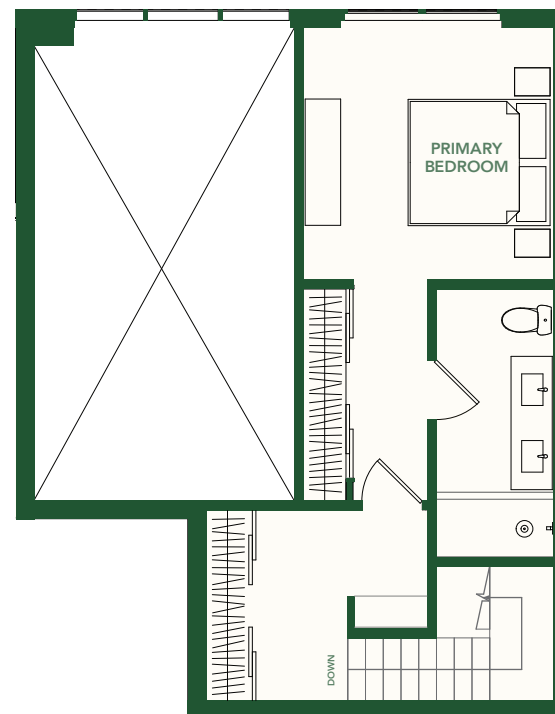
INTERIOR 1,233 SF / 115 M²
TERRACE 715 SF / 66 M²
TOTAL 1,948 SF / 181 M²



BRICKELL AVE.



GROUND LEVEL
Interior - 762 SF / 71 M²



SECOND LEVEL
Interior - 471 SF / 44 M²



These drawings are conceptual only and are for the convenience of reference. They should not be relied upon as representations, express or implied, of the final detail of the residences. Units shown are examples of unit types and may not depict actual units. Stated square footages are ranges for a particular unit type and are measured to the exterior boundaries of the exterior walls and the centerline of interior demising walls and in fact vary from the area that would be determined by using the description and definition of the unit set forth in the declaration (which generally only includes the interior airspace between the perimeter walls and excludes interior structural components). Note that measurements of rooms set forth on this floorplan are generally taken at the greatest points of each given room (as if the room were a perfect rectangle), without regard for any cutouts. Accordingly, the area of the actual room will typically be smaller than the product obtained by multiplying the stated length times width. All dimensions are approximate and may vary with actual construction, and all floor plans and development plans are subject to change.

ARIA LARGO **PLA E**
DEVELOPER/BUILDER PROJECTS

2200 BRICKELL

TYPE L1/L8

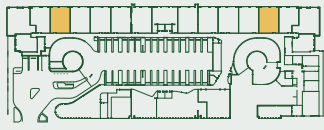
GARDEN VILLAS 104, 114

2 BEDROOMS + OFFICE

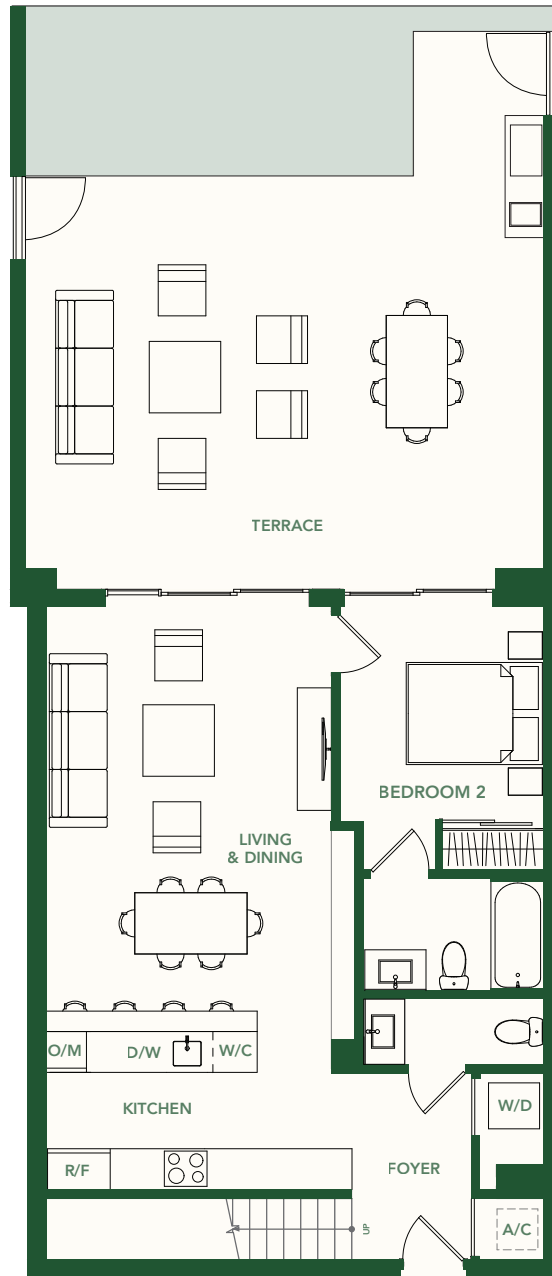
2.5 BATHROOMS

GROUND LEVEL

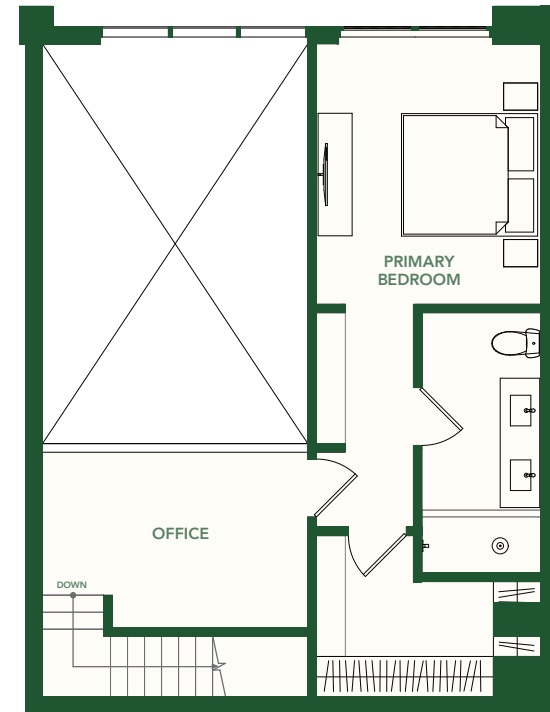
INTERIOR	1,426 SF / 133 M ²
TERRACE	741 SF / 69 M ²
TOTAL	2,167 SF / 201 M ²



BRICKELL AVE.



GROUND LEVEL
Interior - 850 SF / 79 M²



SECOND LEVEL
Interior - 576 SF / 54 M²



These drawings are conceptual only and are for the convenience of reference. They should not be relied upon as representations, express or implied, of the final detail of the residences. Units shown are examples of unit types and may not depict actual units. Stated square footages are ranges for a particular unit type and are measured to the exterior boundaries of the exterior walls and the centerline of interior demising walls and in fact vary from the area that would be determined by using the description and definition of the unit set forth in the declaration (which generally only includes the interior airspace between the perimeter walls and excludes interior structural components). Note that measurements of rooms set forth on this floorplan are generally taken at the greatest points of each given room (as if the room were a perfect rectangle), without regards for any cutouts. Accordingly, the area of the actual room will typically be smaller than the product obtained by multiplying the stated length times width. All dimensions are approximate and may vary with actual construction, and all floor plans and development plans are subject to change.

2200 BRICKELL

TYPE L2/L7

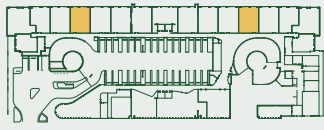
GARDEN VILLAS 105, 113

2 BEDROOMS + OFFICE

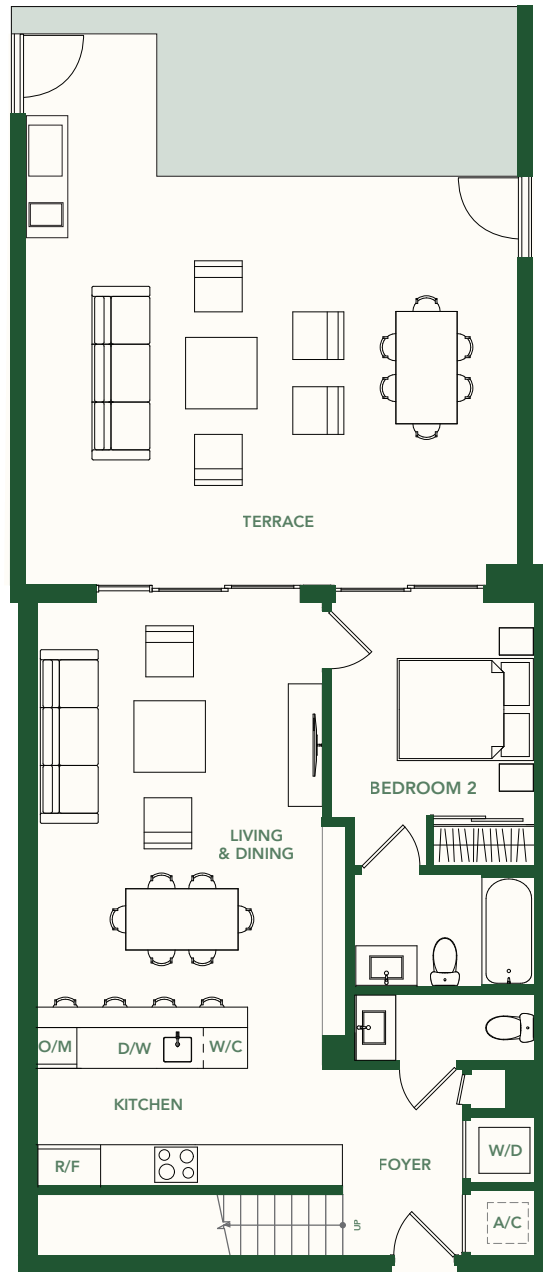
2.5 BATHROOMS

GROUND LEVEL

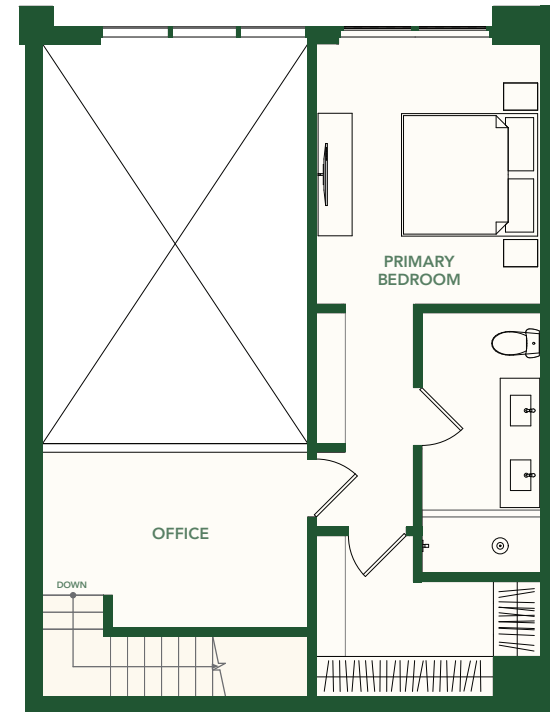
INTERIOR	1,426 SF / 133 M ²
TERRACE	702 SF / 65 M ²
TOTAL	2,128 SF / 198 M ²



BRICKELL AVE.



GROUND LEVEL
Interior - 850 SF / 79 M²



SECOND LEVEL
Interior - 576 SF / 54 M²



These drawings are conceptual only and are for the convenience of reference. They should not be relied upon as representations, express or implied, of the final detail of the residences. Units shown are examples of unit types and may not depict actual units. Stated square footages are ranges for a particular unit type and are measured to the exterior boundaries of the exterior walls and the centerline of interior demising walls and in fact vary from the area that would be determined by using the description and definition of the unit set forth in the declaration (which generally only includes the interior airspace between the perimeter walls and excludes interior structural components). Note that measurements of rooms set forth on this floorplan are generally taken at the greatest points of each given room (as if the room were a perfect rectangle), without regards for any cutouts. Accordingly, the area of the actual room will typically be smaller than the product obtained by multiplying the stated length times width. All dimensions are approximate and may vary with actual construction, and all floor plans and development plans are subject to change.

2200 BRICKELL

TYPE L3/L6

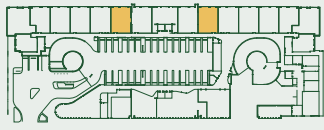
GARDEN VILLAS 107, 111

2 BEDROOMS + OFFICE

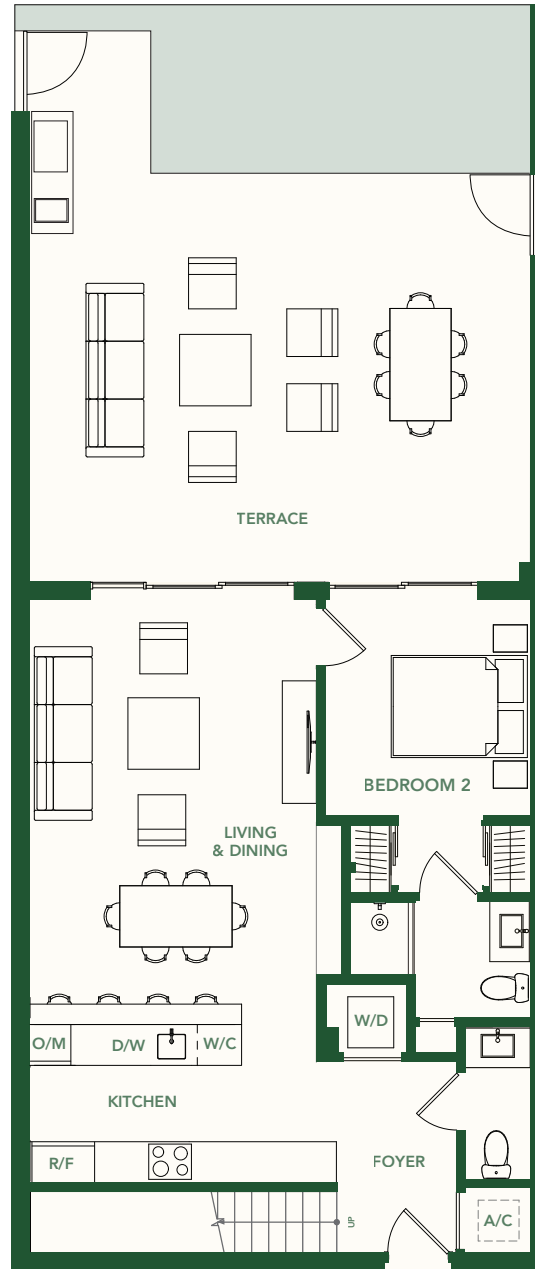
2.5 BATHROOMS

GROUND LEVEL

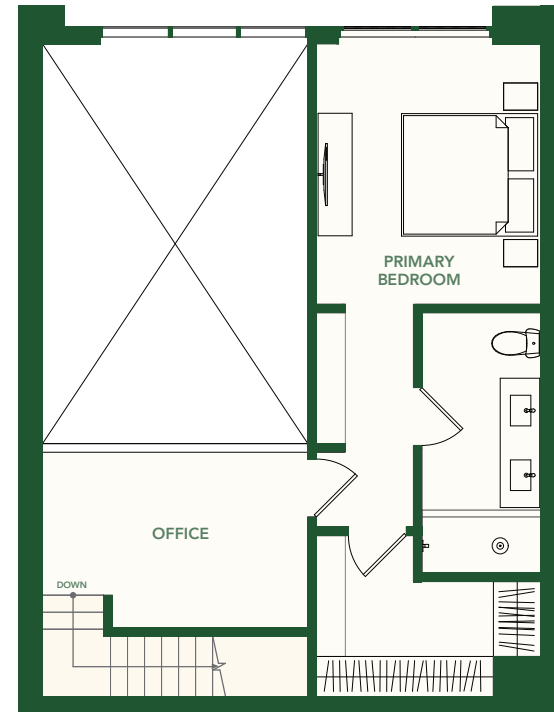
INTERIOR	1,434 SF / 133 M ²
TERRACE	720 SF / 69 M ²
TOTAL	2,154 SF / 200 M ²



BRICKELL AVE.



GROUND LEVEL
Interior - 850 SF / 79 M²



SECOND LEVEL
Interior - 576 SF / 54 M²



These drawings are conceptual only and are for the convenience of reference. They should not be relied upon as representations, express or implied, of the final detail of the residences. Units shown are examples of unit types and may not depict actual units. Stated square footages are ranges for a particular unit type and are measured to the exterior boundaries of the exterior walls and the centerline of interior demising walls and in fact vary from the area that would be determined by using the description and definition of the unit set forth in the declaration (which generally only includes the interior airspace between the perimeter walls and excludes interior structural components). Note that measurements of rooms set forth on this floorplan are generally taken at the greatest points of each given room (as if the room were a perfect rectangle), without regards for any cutouts. Accordingly, the area of the actual room will typically be smaller than the product obtained by multiplying the stated length times width. All dimensions are approximate and may vary with actual construction, and all floor plans and development plans are subject to change.

2200 BRICKELL

TYPE L4/L5

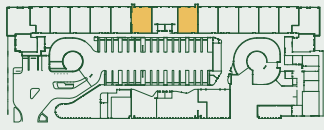
GARDEN VILLAS 108, 110

2 BEDROOMS + OFFICE

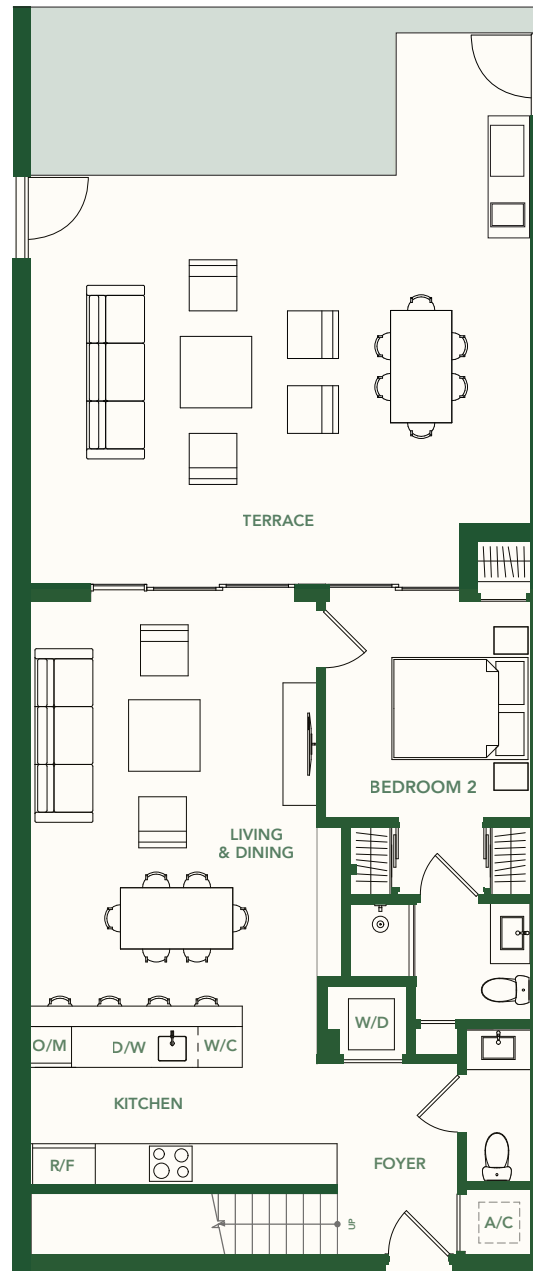
2.5 BATHROOMS

GROUND LEVEL

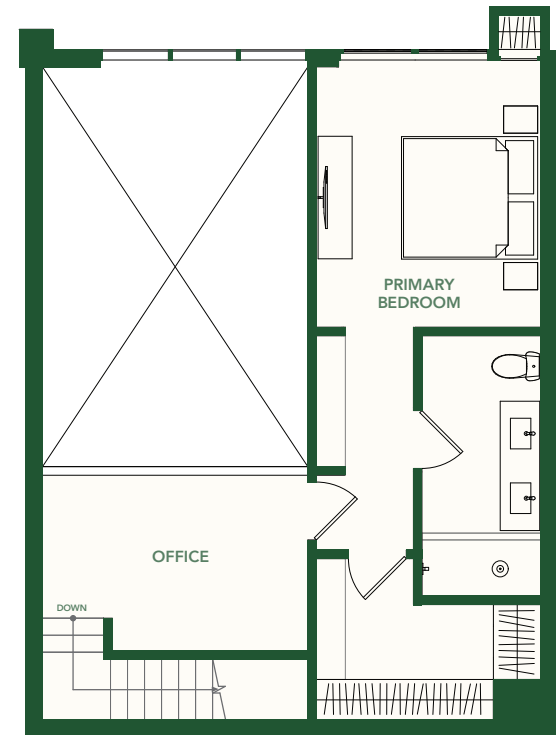
INTERIOR	1,462 SF / 136 M ²
TERRACE	708 SF / 66 M ²
TOTAL	2,170 SF / 202 M ²



BRICKELL AVE.



GROUND LEVEL
Interior - 850 SF / 79 M²



SECOND LEVEL
Interior - 576 SF / 54 M²



These drawings are conceptual only and are for the convenience of reference. They should not be relied upon as representations, express or implied, of the final detail of the residences. Units shown are examples of unit types and may not depict actual units. Stated square footages are ranges for a particular unit type and are measured to the exterior boundaries of the exterior walls and the centerline of interior demising walls and in fact vary from the area that would be determined by using the description and definition of the unit set forth in the declaration (which generally only includes the interior airspace between the perimeter walls and excludes interior structural components). Note that measurements of rooms set forth on this floorplan are generally taken at the greatest points of each given room (as if the room were a perfect rectangle), without regard for any cutouts. Accordingly, the area of the actual room will typically be smaller than the product obtained by multiplying the stated length times width. All dimensions are approximate and may vary with actual construction, and all floor plans and development plans are subject to change.

2200 BRICKELL

TYPE M

GARDEN VILLAS 106, 112

2 BEDROOMS + DEN + OFFICE

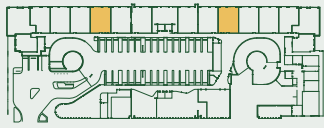
2.5 BATHROOMS

GROUND LEVEL

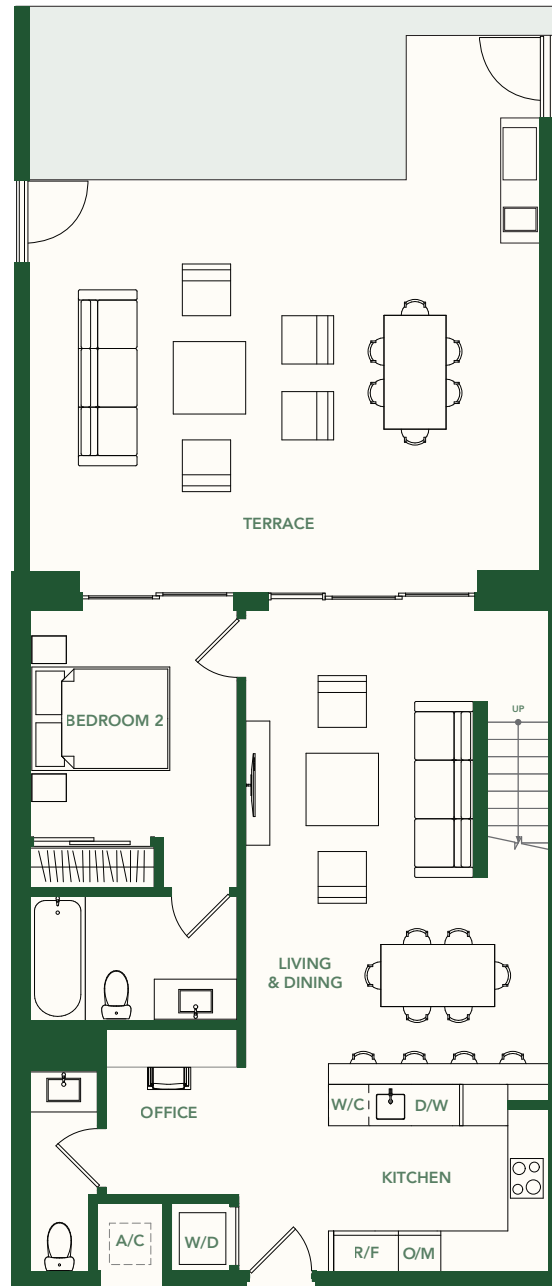
INTERIOR 1,458 SF / 135 M²

TERRACE 720 SF / 69 M²

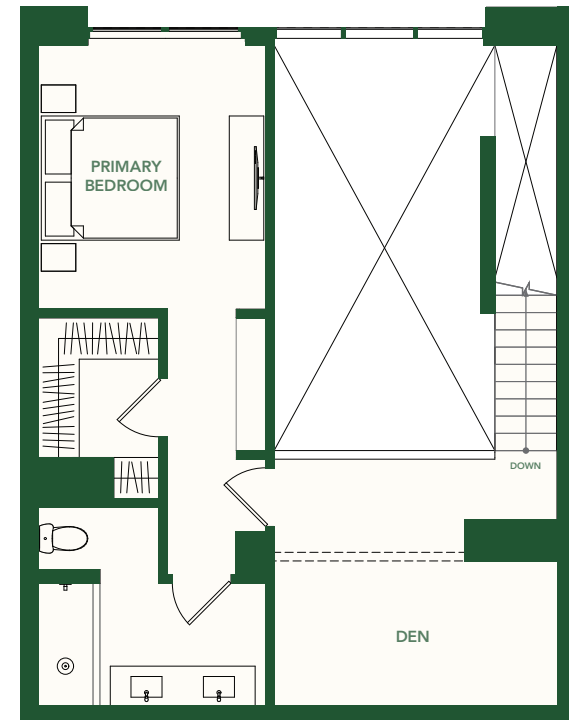
TOTAL 2,178 SF / 202 M²



BRICKELL AVE.



GROUND LEVEL
Interior - 873 SF / 81 M²



SECOND LEVEL
Interior - 585 SF / 54 M²



These drawings are conceptual only and are for the convenience of reference. They should not be relied upon as representations, express or implied, of the final detail of the residences. Units shown are examples of unit types and may not depict actual units. Stated square footages are ranges for a particular unit type and are measured to the exterior boundaries of the exterior walls and the centerline of interior demising walls and in fact vary from the area that would be determined by using the description and definition of the unit set forth in the declaration (which generally only includes the interior airspace between the perimeter walls and excludes interior structural components). Note that measurements of rooms set forth on this floorplan are generally taken at the greatest points of each given room (as if the room were a perfect rectangle), without regards for any cutouts. Accordingly, the area of the actual room will typically be smaller than the product obtained by multiplying the stated length times width. All dimensions are approximate and may vary with actual construction, and all floor plans and development plans are subject to change.

2200 BRICKELL

TYPE N

GARDEN VILLA 109

2 BEDROOMS + OFFICE

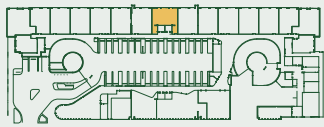
2.5 BATHROOMS

GROUND LEVEL

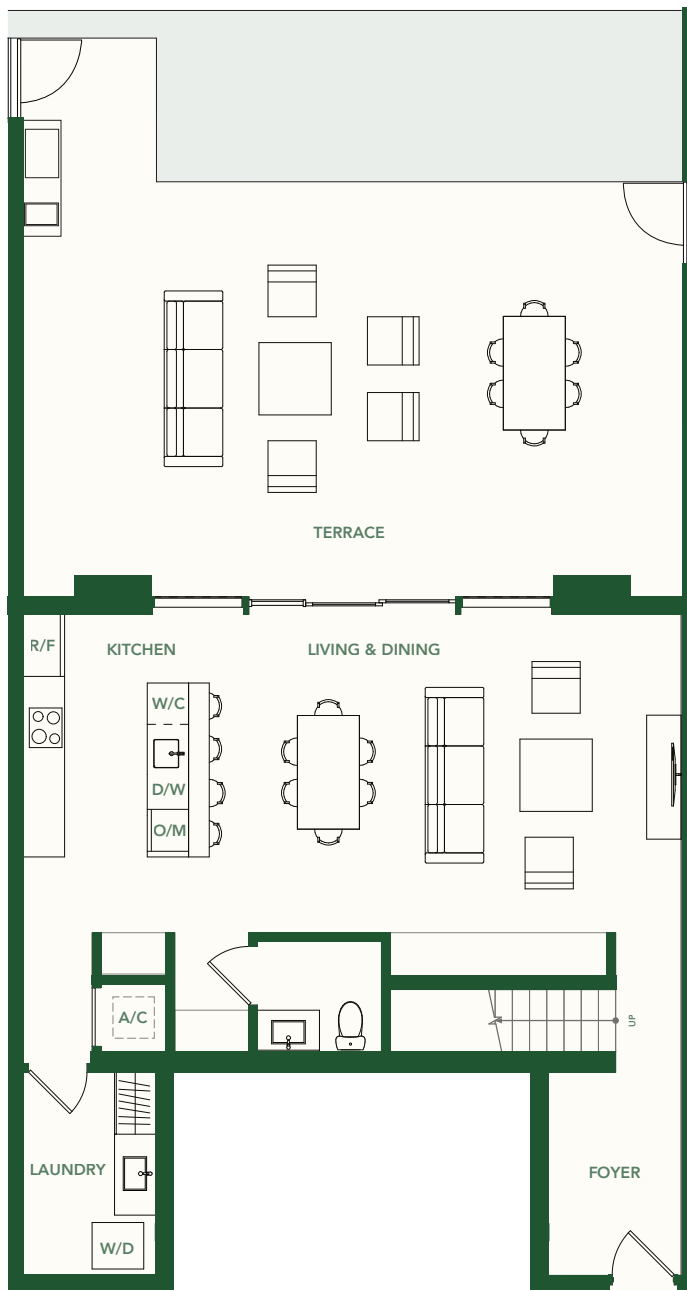
INTERIOR 1,793 SF / 167 M²

TERRACE 926 SF / 86 M²

TOTAL 2,719 SF / 252 M²



BRICKELL AVE.



GROUND LEVEL

Interior - 899 SF / 84 M²



SECOND LEVEL

Interior - 894 SF / 83 M²



These drawings are conceptual only and are for the convenience of reference. They should not be relied upon as representations, express or implied, of the final detail of the residences. Units shown are examples of unit types and may not depict actual units. Stated square footages are ranges for a particular unit type and are measured to the exterior boundaries of the exterior walls and the centerline of interior demising walls and in fact vary from the area that would be determined by using the description and definition of the unit set forth in the declaration (which generally only includes the interior airspace between the perimeter walls and excludes interior structural components). Note that measurements of rooms set forth on this floorplan are generally taken at the greatest points of each given room (as if the room were a perfect rectangle), without regards for any cutouts. Accordingly, the area of the actual room will typically be smaller than the product obtained by multiplying the stated length times width. All dimensions are approximate and may vary with actual construction, and all floor plans and development plans are subject to change.

MARIA LARGO **PL&E**
DEVELOPER/BUILDER PRODUCTS

2200
BRICKELL

TYPE O

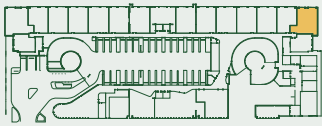
GARDEN VILLA 102

4 BEDROOMS

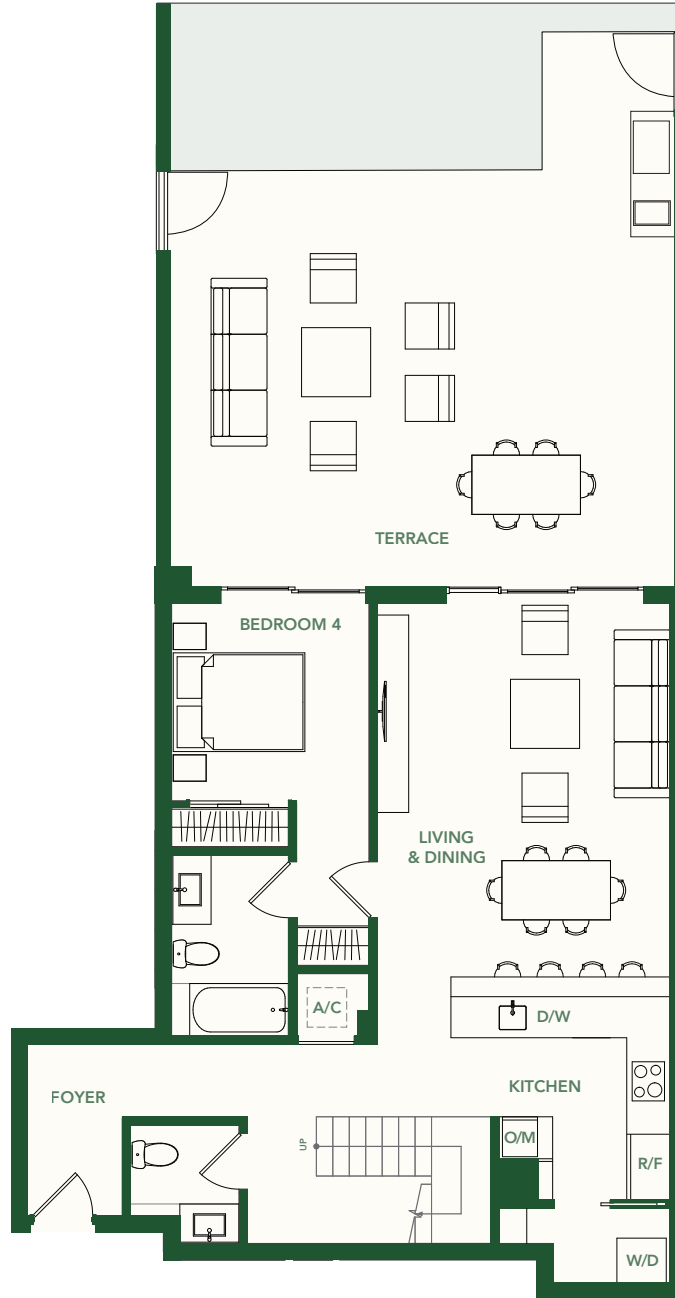
3.5 BATHROOMS

GROUND LEVEL

INTERIOR	1,973 SF / 183 M ²
TERRACE	859 SF / 80 M ²
TOTAL	2,832 SF / 263 M ²



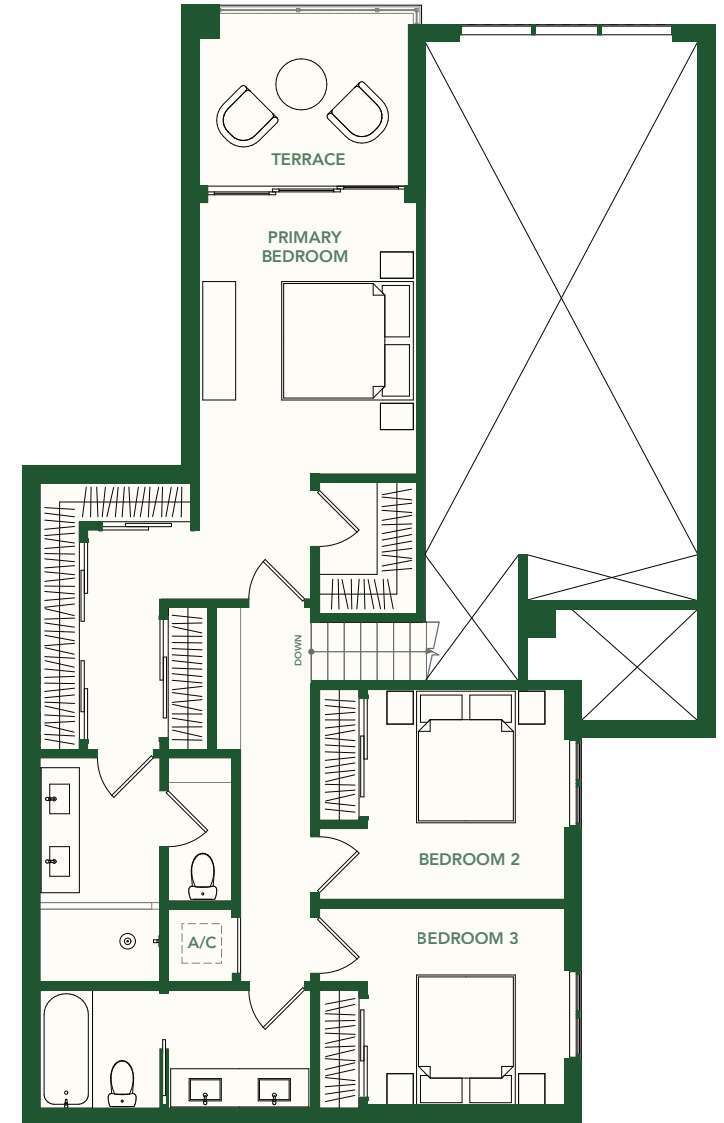
BRICKELL AVE.



GROUND LEVEL

Interior - 996 SF / 93 M²

Terrace - 768 SF / 71 M²



SECOND LEVEL

Interior - 977 SF / 91 M²

Terrace - 91 SF / 9 M²



These drawings are conceptual only and are for the convenience of reference. They should not be relied upon as representations, express or implied, of the final detail of the residences. Units shown are examples of unit types and may not depict actual units. Stated square footages are ranges for a particular unit type and are measured to the exterior boundaries of the exterior walls and the centerline of interior demising walls and in fact vary from the area that would be determined by using the description and definition of the unit set forth in the declaration (which generally only includes the interior airspace between the perimeter walls and excludes interior structural components). Note that measurements of rooms set forth on this floorplan are generally taken at the greatest points of each given room (as if the room were a perfect rectangle), without regards for any cutouts. Accordingly, the area of the actual room will typically be smaller than the product obtained by multiplying the stated length times width. All dimensions are approximate and may vary with actual construction, and all floor plans and development plans are subject to change.

MARIA LARGO **PL&E**
DEVELOPER/BUILDER PRODUCTS

2200 BRICKELL

TYPE P

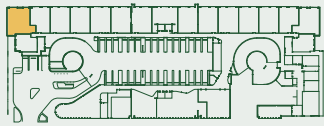
GARDEN VILLA 116

4 BEDROOMS

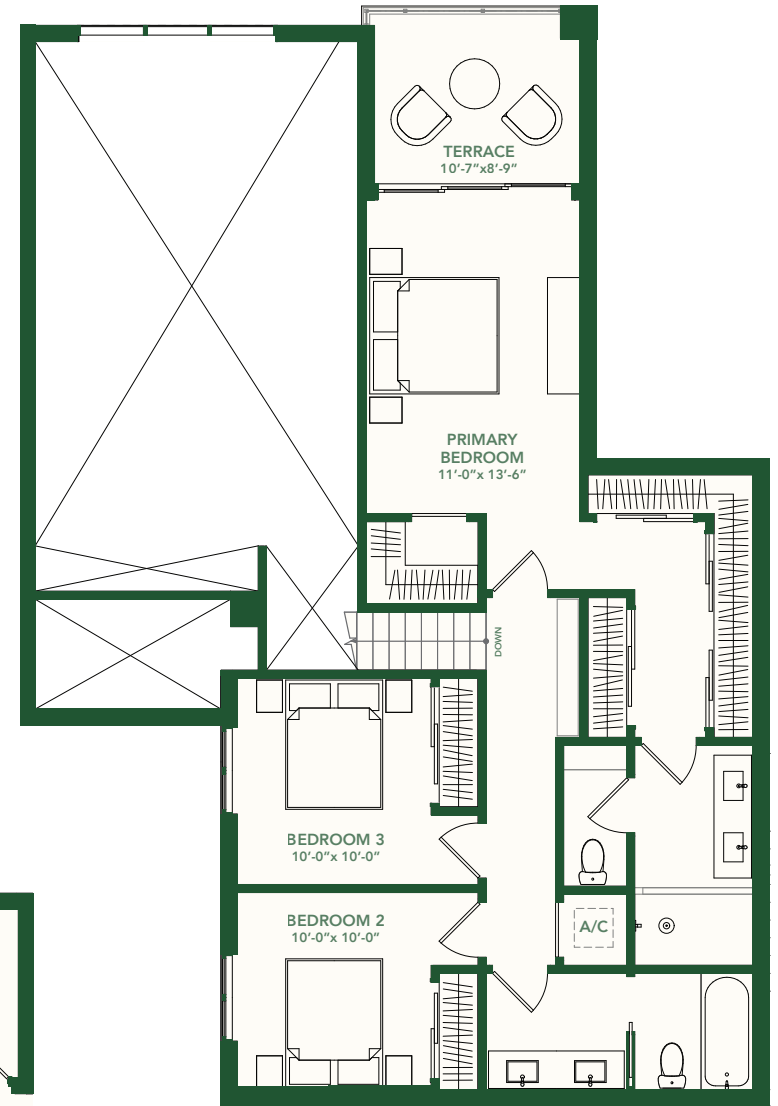
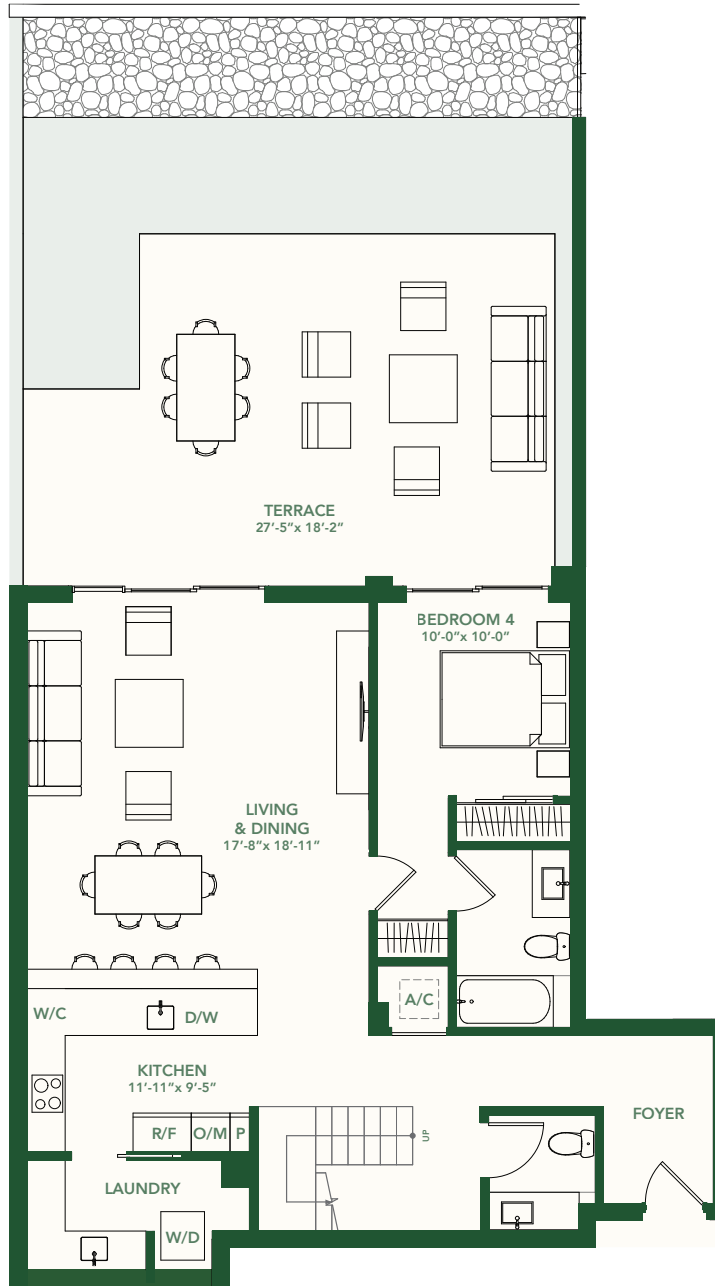
3.5 BATHROOMS

GROUND LEVEL

INTERIOR	2,069 SF / 192 M ²
TERRACE	540 SF / 50 M ²
TOTAL	2,609 SF / 242 M ²



BRICKELL AVE.



These drawings are conceptual only and are for the convenience of reference. They should not be relied upon as representations, express or implied, of the final detail of the residences. Units shown are examples of unit types and may not depict actual units. Stated square footages are ranges for a particular unit type and are measured to the exterior boundaries of the exterior walls and the centerline of interior demising walls and in fact vary from the area that would be determined by using the description and definition of the unit set forth in the declaration (which generally only includes the interior airspace between the perimeter walls and excludes interior structural components). Note that measurements of rooms set forth on this floorplan are generally taken at the greatest points of each given room (as if the room were a perfect rectangle), without regard for any cutouts. Accordingly, the area of the actual room will typically be smaller than the product obtained by multiplying the stated length times width. All dimensions are approximate and may vary with actual construction, and all floor plans and development plans are subject to change.

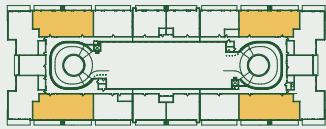
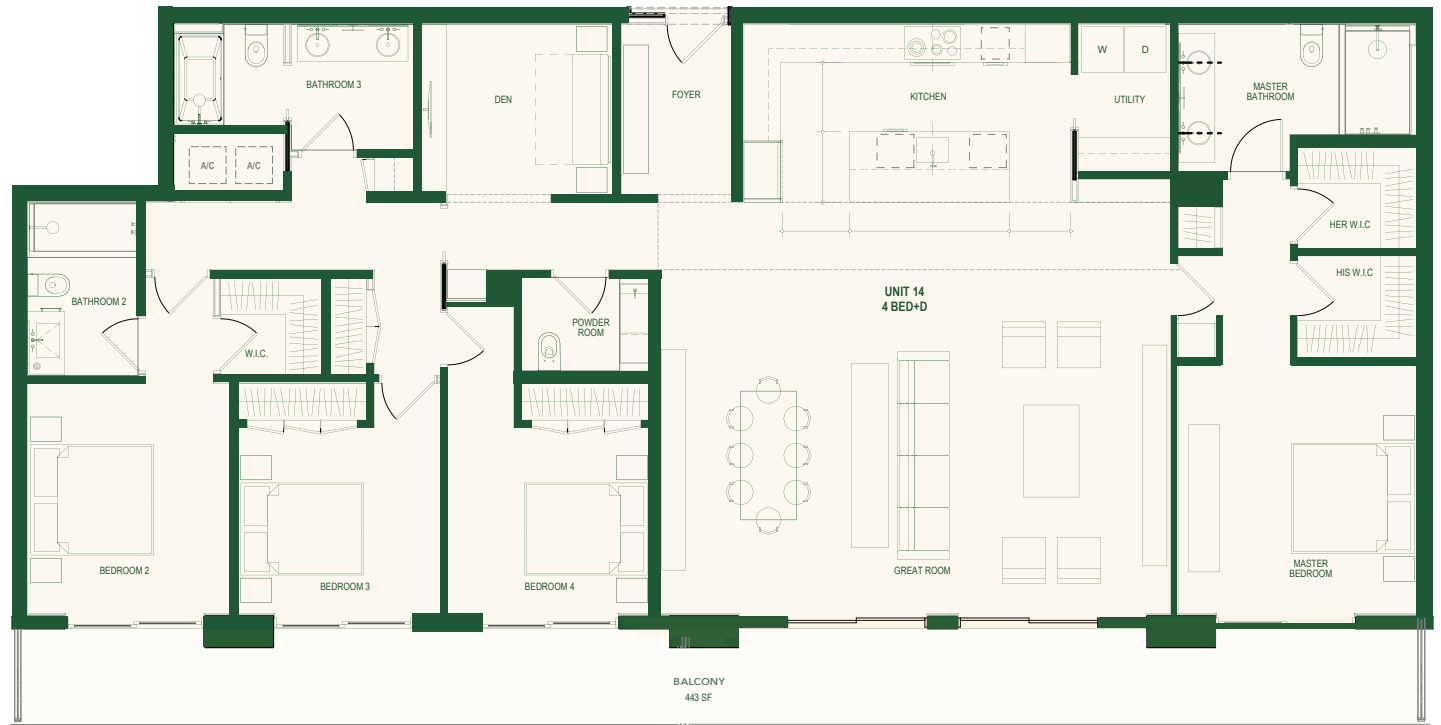


TYPE Q

4 BEDROOM + DEN

3.5 BATHROOMS

INTERIOR 2,489 SF / 231 M²
BALCONY 443 SF / 41 M²
TOTAL 2932 SF / 272 M²



BRICKELL AVE.



These drawings are conceptual only and are for the convenience of reference. They should not be relied upon as representations, express or implied, of the final detail of the residences. Units shown are examples of unit types and may not depict actual units. Stated square footages are ranges for a particular unit type and are measured to the exterior boundaries of the exterior walls and the centerline of interior demising walls and in fact vary from the area that would be determined by using the description and definition of the unit set forth in the declaration (which generally only includes the interior airspace between the perimeter walls and excludes interior structural components). Note that measurements of rooms set forth on this floorplan are generally taken at the greatest points of each given room (as if the room were a perfect rectangle), without regard for any cutouts. Accordingly, the area of the actual room will typically be smaller than the product obtained by multiplying the stated length times width. All dimensions are approximate and may vary with actual construction, and all floor plans and development plans are subject to change.

ARIA LARGO
DEVELOPER/BUILDER

PLA
PROJECTS

SALES & MARKETING BY
ONEMORLD
PROPERTIES

2200
BRICKELL

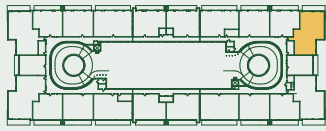
TYPE R

UNIT 07

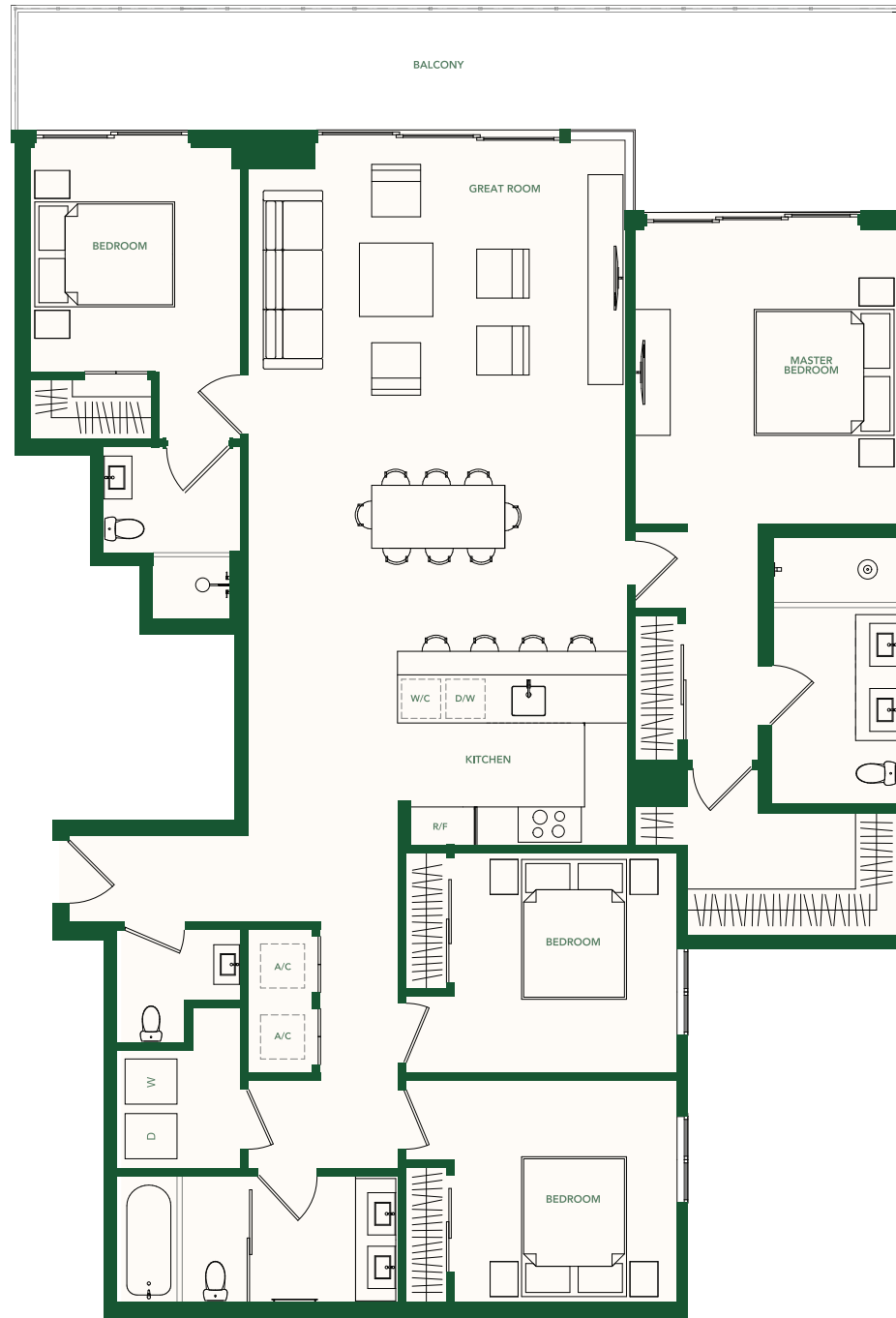
4 BEDROOMS + DEN

3.5 BATHROOMS

INTERIOR 1,950 SF / 181 M²
BALCONY 306 SF / 28 M²
TOTAL 2,256 SF / 209 M²



BRICKELL AVE.



These drawings are conceptual only and are for the convenience of reference. They should not be relied upon as representations, express or implied, of the final detail of the residences. Units shown are examples of unit types and may not depict actual units. Stated square footages are ranges for a particular unit type and are measured to the exterior boundaries of the exterior walls and the centerline of interior demising walls and in fact vary from the area that would be determined by using the description and definition of the unit set forth in the declaration (which generally only includes the interior airspace between the perimeter walls and excludes interior structural components). Note that measurements of rooms set forth on this floorplan are generally taken at the greatest points of each given room (as if the room were a perfect rectangle), without regards for any cutouts. Accordingly, the area of the actual room will typically be smaller than the product obtained by multiplying the stated length times width. All dimensions are approximate and may vary with actual construction, and all floor plans and development plans are subject to change.

ARIA LARGO **PLAÉ**
 DEVELOPER/BUILDER PRODUCTS

2200 BRICKELL

TYPE S

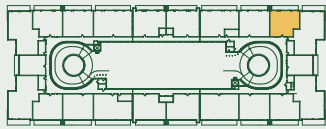
UNIT 08

1 BEDROOM + DEN

1.5 BATHROOMS

LEVELS 2 - 3

INTERIOR	1,038 SF / 96 M ²
BALCONY	160 SF / 15 M ²
TOTAL	1,198 SF / 111 M ²



BRICKELL AVE.



These drawings are conceptual only and are for the convenience of reference. They should not be relied upon as representations, express or implied, of the final detail of the residences. Units shown are examples of unit types and may not depict actual units. Stated square footages are ranges for a particular unit type and are measured to the exterior boundaries of the exterior walls and the centerline of interior demising walls and in fact vary from the area that would be determined by using the description and definition of the unit set forth in the declaration (which generally only includes the interior airspace between the perimeter walls and excludes interior structural components). Note that measurements of rooms set forth on this floorplan are generally taken at the greatest points of each given room (as if the room were a perfect rectangle), without regards for any cutouts. Accordingly, the area of the actual room will typically be smaller than the product obtained by multiplying the stated length times width. All dimensions are approximate and may vary with actual construction, and all floor plans and development plans are subject to change.